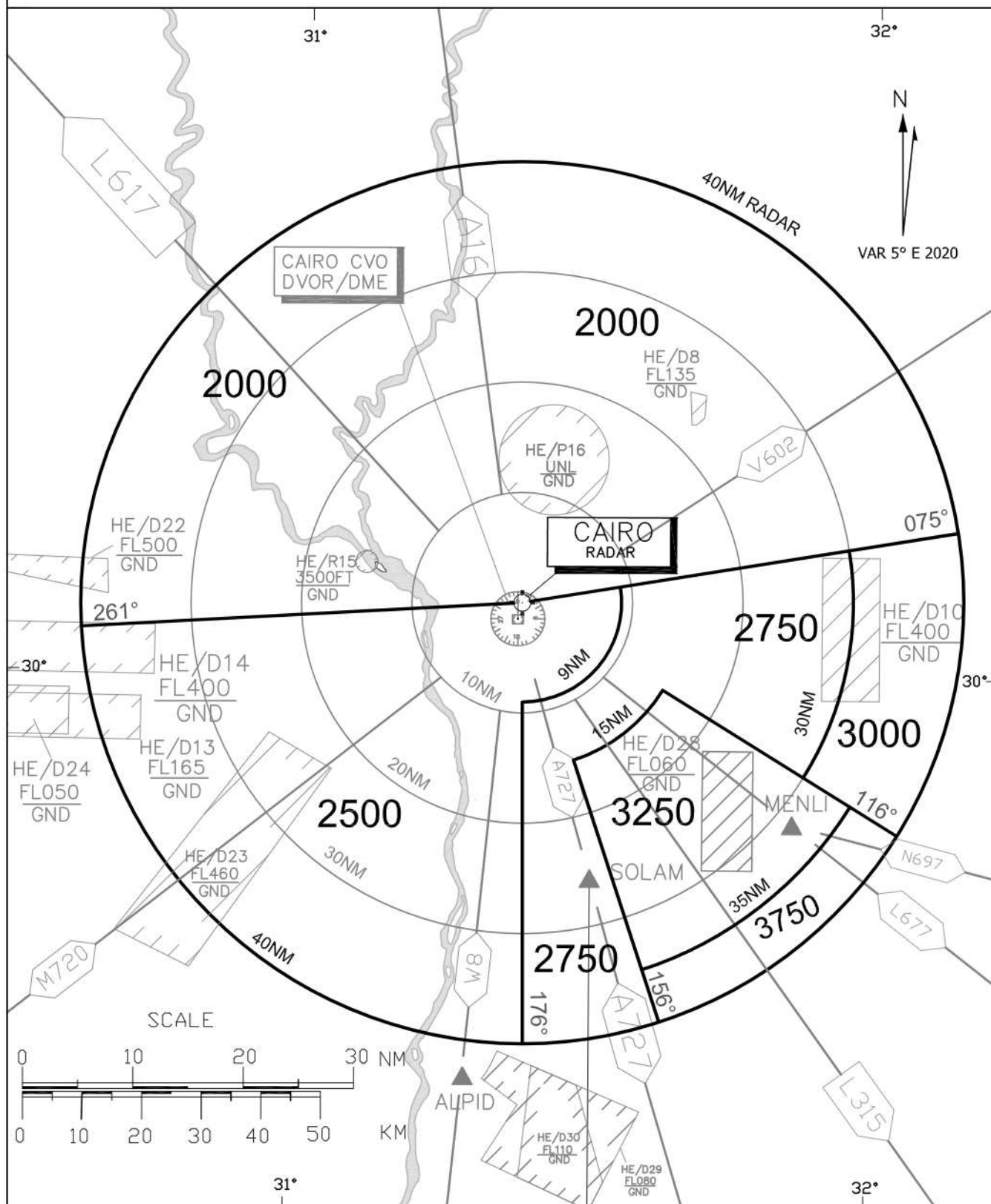
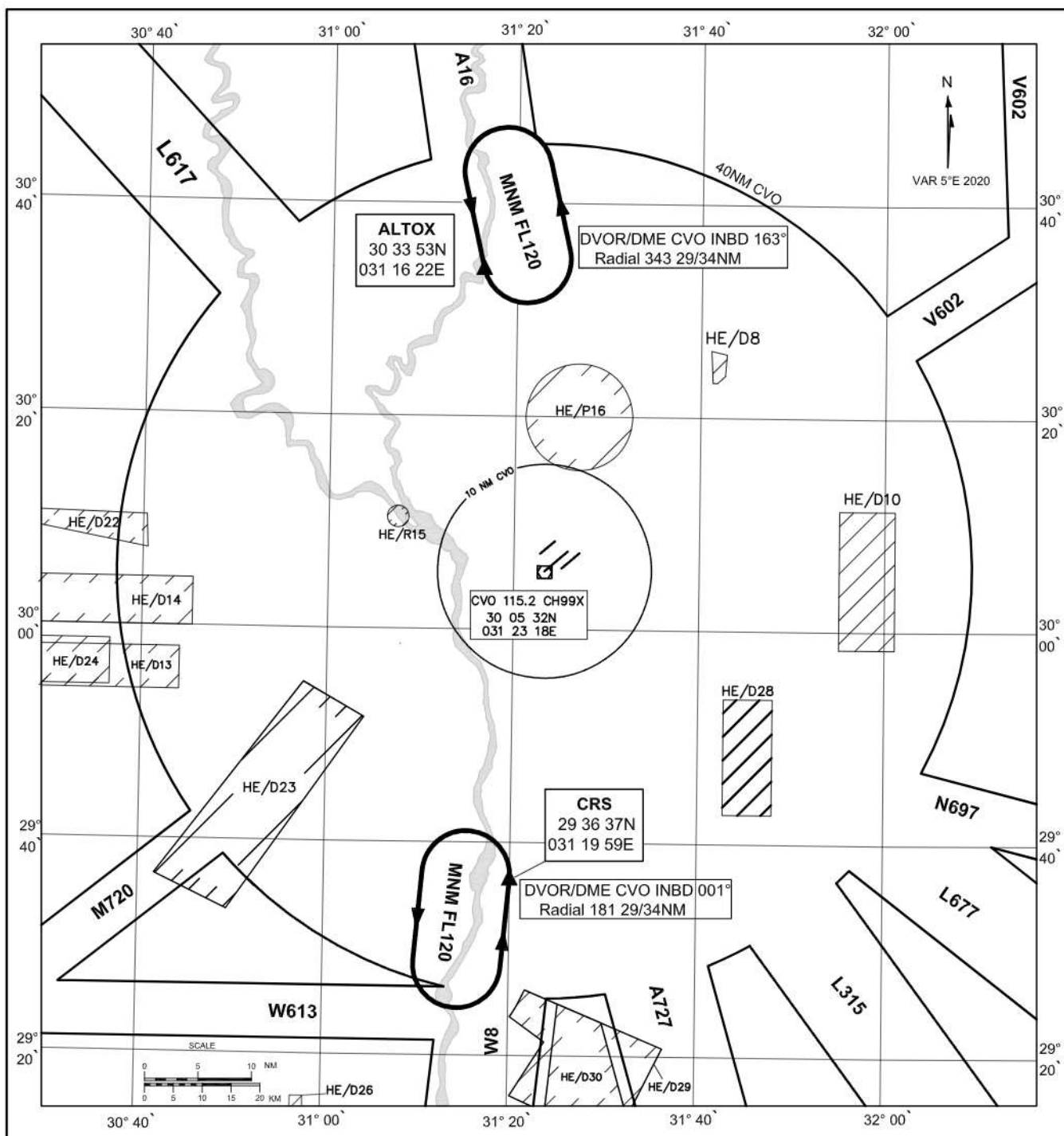


CAIRO
MINIMUM RADAR VECTORING ALTITUDE CHART





CAIRO TMA OUTER FIXES HOLDING PROCEDURES



- Outer Fixes Holding :-

Vectors to these points will be provided by ATC When excessive holdings are expected.

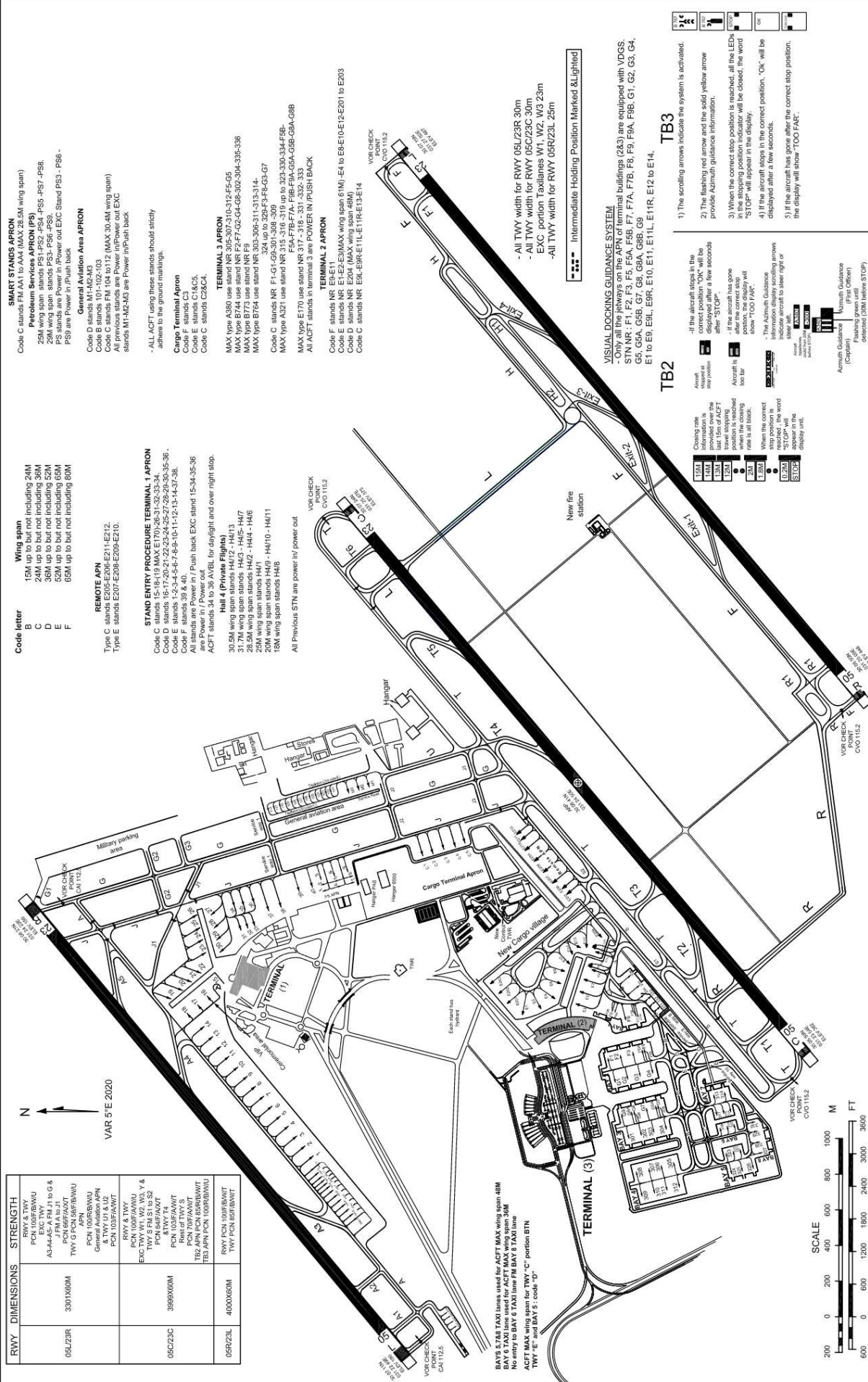
- In case of CVO INOP use ALTOX and CRS as RNAV holdings.

For Simulation Use Only
Not For Real life

CAIRO/CAIRO

TWR	118.1	125.875
PRE-FLIGHT	120.1	127.6
D-ATIS	122.6	
GND	120.4	121.9 126.375
EMRG	121.5	

APN ELEV 387FT
AIRCRAFT PARKING / DOCKING
CHART - ICAO

[illegible]



For Simulation Use Only
Not For Real life

HECA/CAI

INS COORDINATES

STAND NR	COORDINATES	ELEV (FT)	STAND NR	COORDINATES	ELEV (FT)	STAND NR	COORDINATES	ELEV (FT)
1	300728.4N0312330.9E	208.1	316	300613.8N0312340.8E	381.6	F5A	300629.1N0312355.1E	377.3
2	300729.9N0312333.0E	208.3	317	300615.1N0312340.5E	380.9	F7A	300629.1N0312400.9E	378.6
3	300731.4N0312335.0E	208.0	318	300615.1N0312339.2E	379.2	F8A	300634.3N0312401.6E	380.8
4	300733.0N0312337.1E	207.3	319	300617.5N0312339.6E	380.0	F5B	300628.6N0312356.3E	377.0
5	300734.5N0312339.1E	206.4	320	300612.1N0312340.0E	380.7	F7B	300629.7N0312359.7E	377.7
6	300736.0N0312341.2E	205.4	321	300611.1N0312334.8E	377.8	F9B	300635.4N0312401.0E	380.2
7	300737.6N0312343.3E	204.6	322	300612.1N0312334.5E	377.0	G1	300633.5N0312346.4E	375.4
8	300739.1N0312345.3E	204.9	323	300613.8N0312334.1E	376.2	G2	300631.2N0312346.9E	376.1
9	300740.6N0312347.4E	205.7	324	300612.1N0312337.8E	375.1	G3	300629.0N0312347.8E	376.3
10	300742.4N0312349.4E	210.7	325	300610.1N0312328.4E	376.2	G4	300626.7N0312348.3E	377.1
11	300744.1N0312351.5E	210.0	326	300608.0N0312329.0E	377.6	G5	300625.9N0312344.5E	376.2
12	300745.5N0312353.6E	210.5	327	300605.6N0312333.9E	380.3	G7	300628.4N0312343.5E	376.4
13	300747.0N0312355.6E	211.5	328	300606.1N0312336.1E	381.5	G8	300630.7N0312343.0E	376.2
14	300748.6N0312357.7E	212.4	329	300606.6N0312338.4E	382.6	G9	300632.9N0312342.2E	375.2
15	300746.4N0312405.9E	223.9	330	300607.4N0312403.6E	383.3	G5A	300626.4N0312343.4E	377.0
16	300748.1N0312404.1E	220.3	331	300625.0N0312403.6E	383.8	G8A	300631.1N0312342.2E	376.7
17	300749.8N0312402.2E	216.8	332	300625.8N0312404.8E	382.9	G5B	300625.9N0312344.6E	376.1
18	300751.7N0312400.4E	213.1	333	300626.7N0312405.9E	383.2	G8B	300630.4N0312343.4E	375.8
19	300754.7N0312403.4E	214.5	334	300627.8N0312407.3E	384.3	H4-1	300720.3N0312318.1E	202.0
20	300752.6N0312405.2E	218.3	335	300629.1N0312408.7E	385.5	H4-2	300721.1N0312318.8E	203.0
21	300751.0N0312407.0E	221.8	336	300630.7N0312410.8E	387.2	H4-3	300721.8N0312319.8E	203.0
22	300749.3N0312408.9E	225.4	AA1	300701.9N0312255.7E	209.0	H4-4	300722.6N0312320.8E	204.0
23	300748.5N0312413.2E	230.5	AA2	300702.5N0312256.7E	211.0	H4-5	300723.3N0312321.8E	204.0
24	300749.1N0312415.9E	233.6	AA3	300703.0N0312257.7E	210.0	H4-6	300724.0N0312322.8E	205.0
25	300749.6N0312418.4E	236.2	AA4	300703.6N0312258.7E	210.0	H4-7	300724.8N0312323.7E	205.0
26	300750.2N0312421.1E	238.5	C1	300709.2N0312434.2E	318.7	H4-8	300725.4N0312324.6E	206.0
27	300747.6N0312421.1E	243.9	C2	300707.3N0312434.6E	320.4	H4-9	300725.9N0312325.2E	206.0
28	300747.0N0312418.4E	241.5	C3	300705.4N0312435.6E	321.9	H4-10	300726.3N0312325.9E	207.0
29	300746.5N0312415.9E	238.9	C4	300703.1N0312436.1E	323.5	H4-11	300726.8N0312326.5E	207.0
30	300745.9N0312413.3E	235.9	C5	300701.5N0312436.9E	324.7	H4-12	300727.5N0312327.4E	206.6
31	300742.1N0312418.0E	244.4	E1	300650.6N0312401.2E	330.4	H4-13	300728.2N0312328.4E	206.6
32	300740.9N0312418.5E	246.6	E2	300647.3N0312402.5E	331.0	M1	300719.1N0312448.3E	308.4
33	300739.6N0312418.9E	248.6	E3	300640.8N0312403.5E	334.3	M2	300721.0N0312447.7E	305.4
34	300743.3N0312422.9E	248.7	E4	300644.8N0312404.6E	334.1	M3	300722.8N0312447.0E	302.5
35	300741.6N0312423.1E	251.0	E5	300640.2N0312406.1E	336.7	PS1	300727.3N0312426.4E	275.2
36	300739.8N0312423.8E	253.2	E6	300643.7N0312407.7E	336.6	PS2	300727.6N0312427.7E	276.4
37	300737.1N0312422.1E	255.4	E7	300639.5N0312408.7E	339.2	PS3	300727.6N0312428.8E	276.0
38	300734.9N0312423.0E	259.1	E8	300643.7N0312410.3E	339.1	PS4	300724.8N0312427.3E	277.7
39	300731.6N0312426.3E	267.3	E9	300638.7N0312411.6E	341.8	PS5	300725.2N0312428.5E	278.9
40	300729.2N0312427.2E	271.7	E10	300642.2N0312411.9E	340.2	PS6	300725.2N0312429.7E	281.0
101	300726.1N0312447.1E	288.9	E11	300638.0N0312415.5E	345.1	PS7	300721.6N0312428.4E	282.8
102	300726.8N0312446.8E	287.5	E12	300639.1N0312415.4E	344.3	PS8	300721.9N0312429.7E	283.9
103	300727.8N0312446.5E	296.2	E13	300640.3N0312415.4E	344.4	PS9	300722.8N0312430.5E	286.0
104	300728.8N0312446.2E	294.7	E14	300641.7N0312413.9E	341.3	VIP	300745.7N0312358.2E	212.0
105	300729.8N0312445.8E	293.0	E201	300653.4N0312403.4E	329.9			
106	300730.9N0312445.4E	291.3	E202	300655.0N0312405.5E	329.4			
107	300732.0N0312445.0E	289.6	E203	300656.5N0312407.5E	329.0			
108	300733.1N0312444.6E	287.9	E204	300636.4N0312417.6E	347.4			
109	300734.2N0312444.2E	286.1	E205	300642.8N0312426.5E	363.7			
110	300735.2N0312443.9E	284.4	E206	300643.7N0312427.7E	364.1			
111	300736.3N0312443.5E	282.7	E207	300645.5N0312428.8E	364.2			
112	300737.4N0312443.1E	281.0	E208	300647.2N0312431.0E	362.0			
301	300630.8N0312334.6E	375.2	E209	300648.9N0312433.3E	368.2			
302	300628.6N0312335.2E	376.1	E210	300650.6N0312435.6E	364.9			
303	300626.3N0312336.0E	376.2	E211	300651.3N0312437.8E	362.3			
304	300624.0N0312336.6E	376.2	E212	300652.1N0312438.9E	350.4			
305	300623.0N0312332.6E	375.5	E11L	300637.4N0312414.5E	345.1			
306	300625.4N0312331.7E	376.2	E11R	300637.9N0312415.8E	345.3			
307	300627.8N0312331.1E	376.0	E9L	300638.0N0312410.7E	341.3			
308	300630.2N0312330.3E	375.0	E9R	300638.6N0312411.8E	342.0			
309	300628.3N0312322.0E	370.4	F1	300635.5N0312353.9E	375.2			
310	300625.9N0312322.6E	371.5	F2	300633.3N0312354.8E	376.1			
311	300621.1N0312323.5E	371.6	F3	300631.0N0312355.2E	377.2			
312	300621.1N0312324.1E	370.6	F4	300628.6N0312356.2E	377.2			
313	300616.2N0312346.8E	385.0	F7	300629.5N0312400.0E	377.9			
314	300614.2N0312347.4E	386.3	F8	300631.8N0312359.4E	378.0			
315	300612.5N0312341.3E	382.5	F9	300635.5N0312401.2E	380.4			



For Simulation Use Only
Not For Real Life

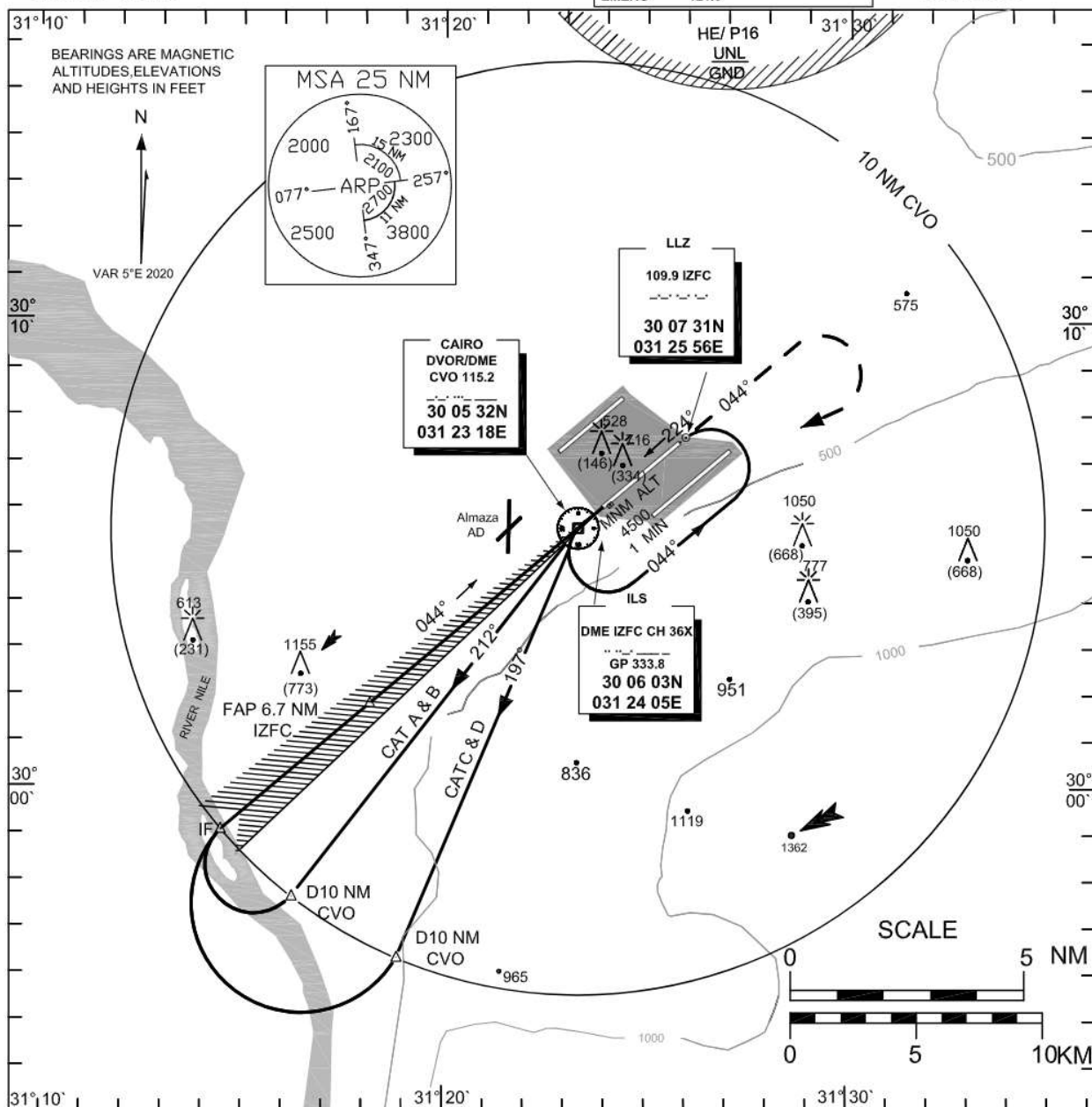
HECA/CAI

INSTRUMENT
APPROACH
CHART-ICAO

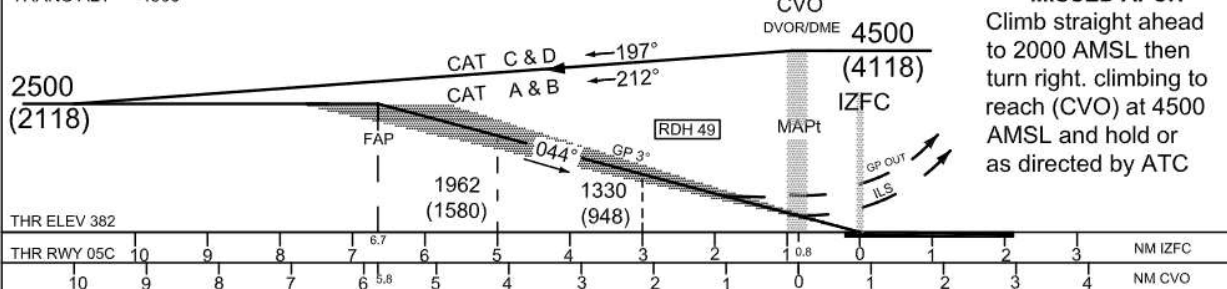
AERODROME ELEV 467 FT
HEIGHTS RELATED TO
THR RWY 05C ELEV 382FT

APP	119.05	119.975	120.7	124.375	119.55
TWR	118.1	125.875			
PRE-FLIGHT	120.1	127.6			
D-ATIS	122.6				
GND	120.4	121.9	126.375		
EMERG	121.5				

CAIRO /CAIRO
ILS or LOC
RWY05C



TRANS LEVEL FL 60
TRANS ALT 4500



MISSED APCH
Climb straight ahead
to 2000 AMSL then
turn right, climbing to
reach (CVO) at 4500
AMSL and hold or
as directed by ATC

OCA (OCH)	A	B	C	D	GP INOP
Straight in CAT I	611(229)	623(241)	631(249)	642(260)	710(328)
Straight in CAT II	474(092)	491(109)	503(121)	517(135)	



CAIRO (HECA)

ILS or LOC RWY 05C

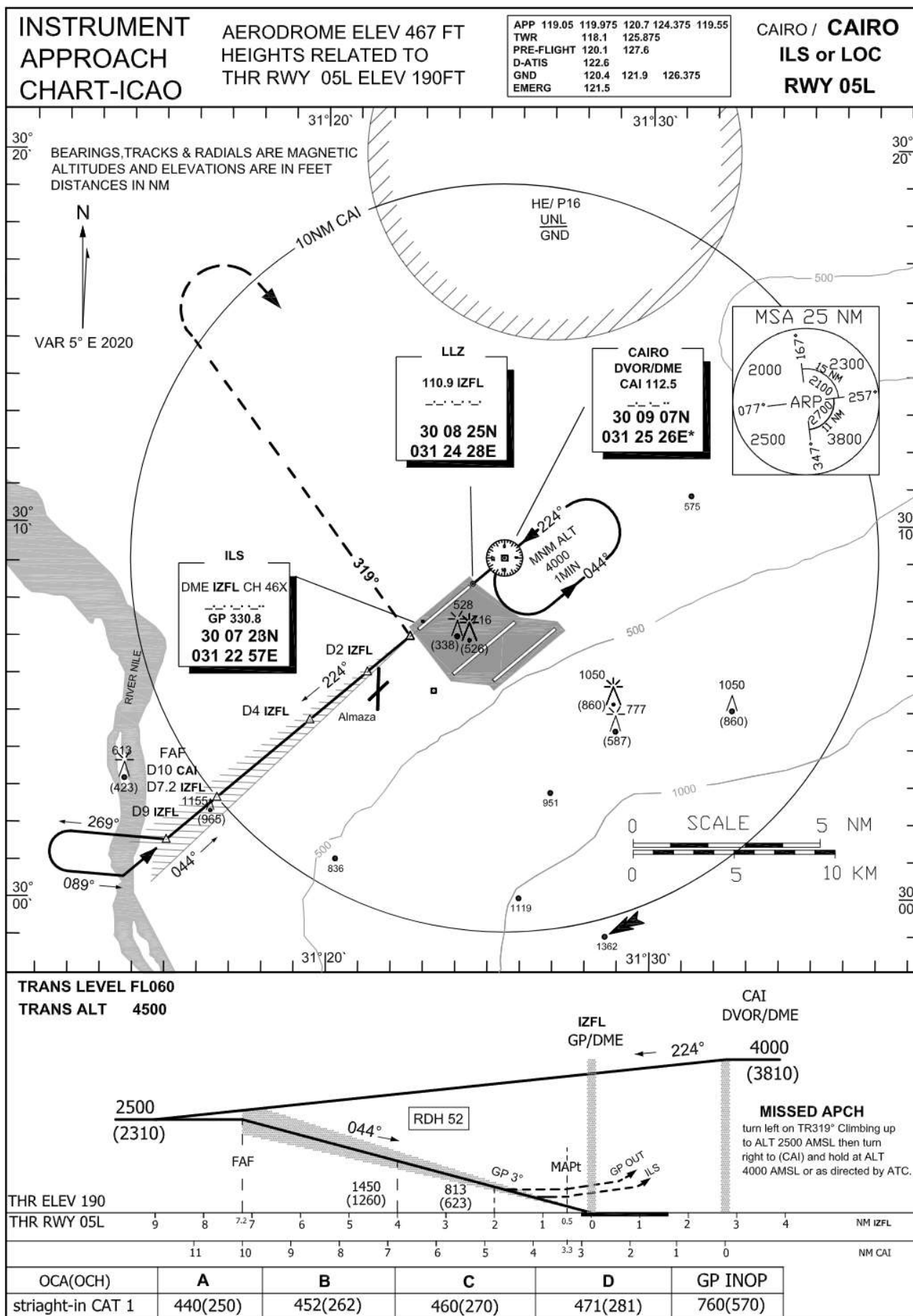
AERONAUTICAL DATA TABULATION

ILS APCH to RWY 05C from CVO DVOR/DME	
Fix/point	Coordinates
CVO DVOR/DME (IAF)	30° 05' 32.3"N 031° 23' 18.3"E
D 10NM CVO - TR197° CAT C&D	29° 56' 16.3"N 031° 18' 57.9"E
D 10NM CVO - TR212° CAT A&B	29° 57' 33.3"N 031° 16' 21.3"E
D 10NM CVO - TR 044° (IF)	29° 58' 58.9"N 031° 14' 35.0"E
D 5.8NM CVO - TR 044° (FAP)	30° 01' 43.4"N 031° 18' 13.4"E
(MAPt) CVO TR 044°/ 0.8NM IZFC(DME)	30° 05' 32.3"N 031° 23' 18.3"E
THR RWY 05C	30° 05' 58.88"N 031° 23' 53.64"E
IZFC (GP/DME)	30° 06' 02.7"N 031° 24' 05.1"E
IZFC (LLZ)	30° 07' 30.5"N 031° 25' 55.6"E



For Simulation Use Only
Not For Real Life

HECA/CAI





CAIRO (HECA)

ILS or LOC RWY 05L

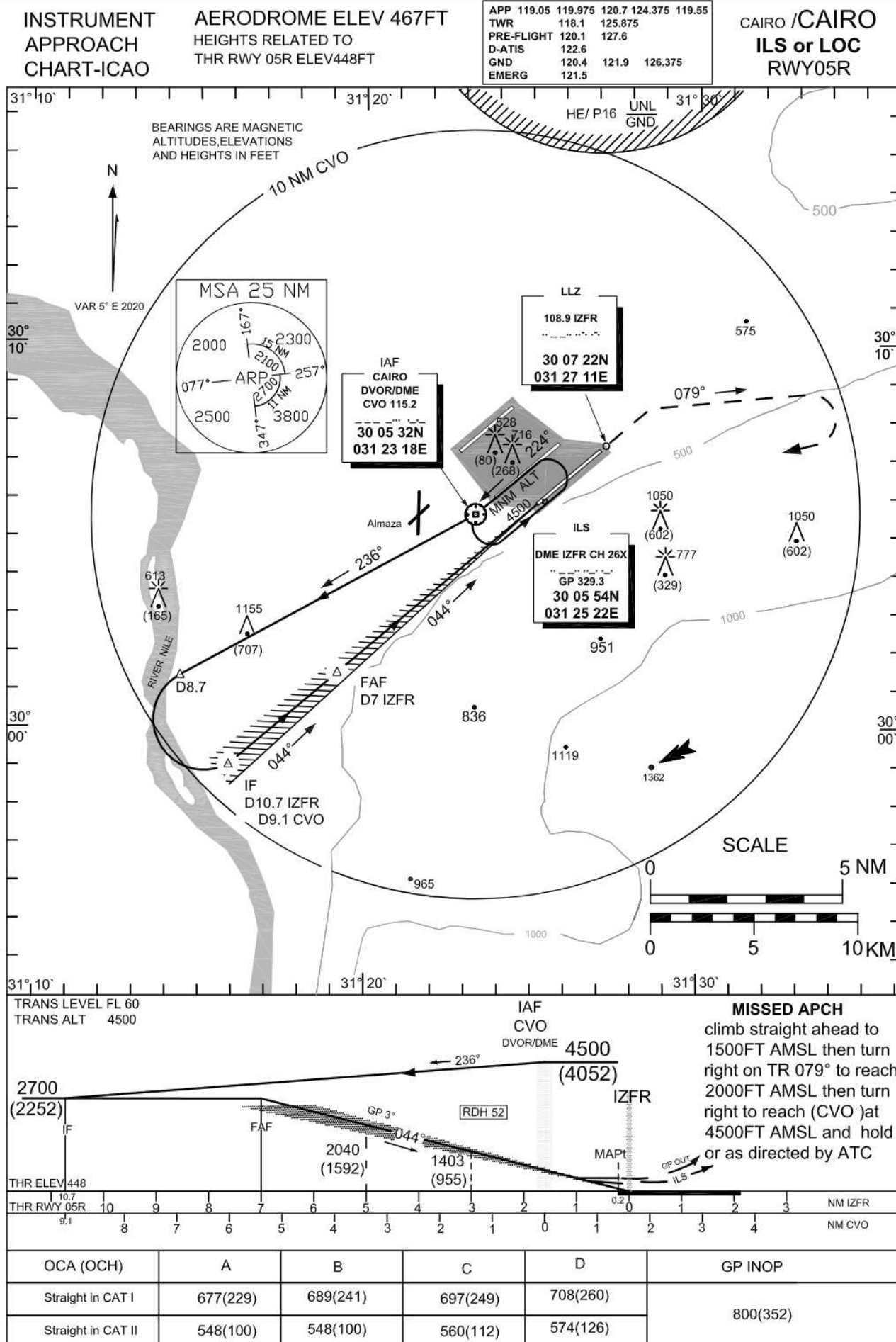
AERONAUTICAL DATA TABULATION

ILS APCH to RWY 05L from CAI DVOR/DME	
Fix/point	Coordinates
CAI DVOR/DME (IAF)	30° 09' 07.2"N 031° 25' 26.0"E
D9 IZFL –TR224°/9NM IZFL	30° 01' 27.3"N 031° 15' 07.7"E
D7.2 IZFL –TR 044°/7.2NM IZFL (FAF)	30° 02' 36.1"N 031° 16' 40.3"E
(MAPt) BRG 224.49°/ 3.3NM SHM, 0.5NM IZFL(DME)	30° 06' 59.47"N 031° 22' 33.4"E
THR RWY 05L	30° 07' 11.03"N 031° 22' 48.88"E
IZFL (GP/DME)	30° 07' 23.3"N 031° 22' 56.6"E
IZFL (LLZ)	30° 08' 25.0"N 031° 24' 28.2"E



For Simulation Use Only
Not For Real Life

HECA/CAI





CAIRO (HECA)

ILS or LOC RWY 05R

AERONAUTICAL DATA TABULATION

ILS APCH to RWY 05R from CVO DVOR/DME	
Fix/point	Coordinates
CVO DVOR/DME (IAF)	30° 05' 32.3"N 031° 23' 18.3"E
D8.7 CVO –TR236°/8.7NM CVO	30° 01' 15.6"N 031° 14' 30.6"E
D 10.7 IZFR TR 044° - (IF)	29° 58' 56.7"N 031° 15' 59.6"E
D 7 IZFR TR 044° - (FAF)	30° 01' 22.3"N 031° 19' 12.9"E
(MAPt) THR RWY 05R TR 044° /0.2 NM IZFR(DME)	30° 05' 49.78"N 031° 25' 08.65"E
THR RWY 05R	30° 05' 49.78"N 031° 25' 08.65"E
IZFR (GP/DME)	30° 05' 54.1"N 031° 25' 22.1"E
IZFR (LLZ)	30° 07' 22.0"N 031° 27' 11.5"E



For Simulation Use Only
Not For Real Life

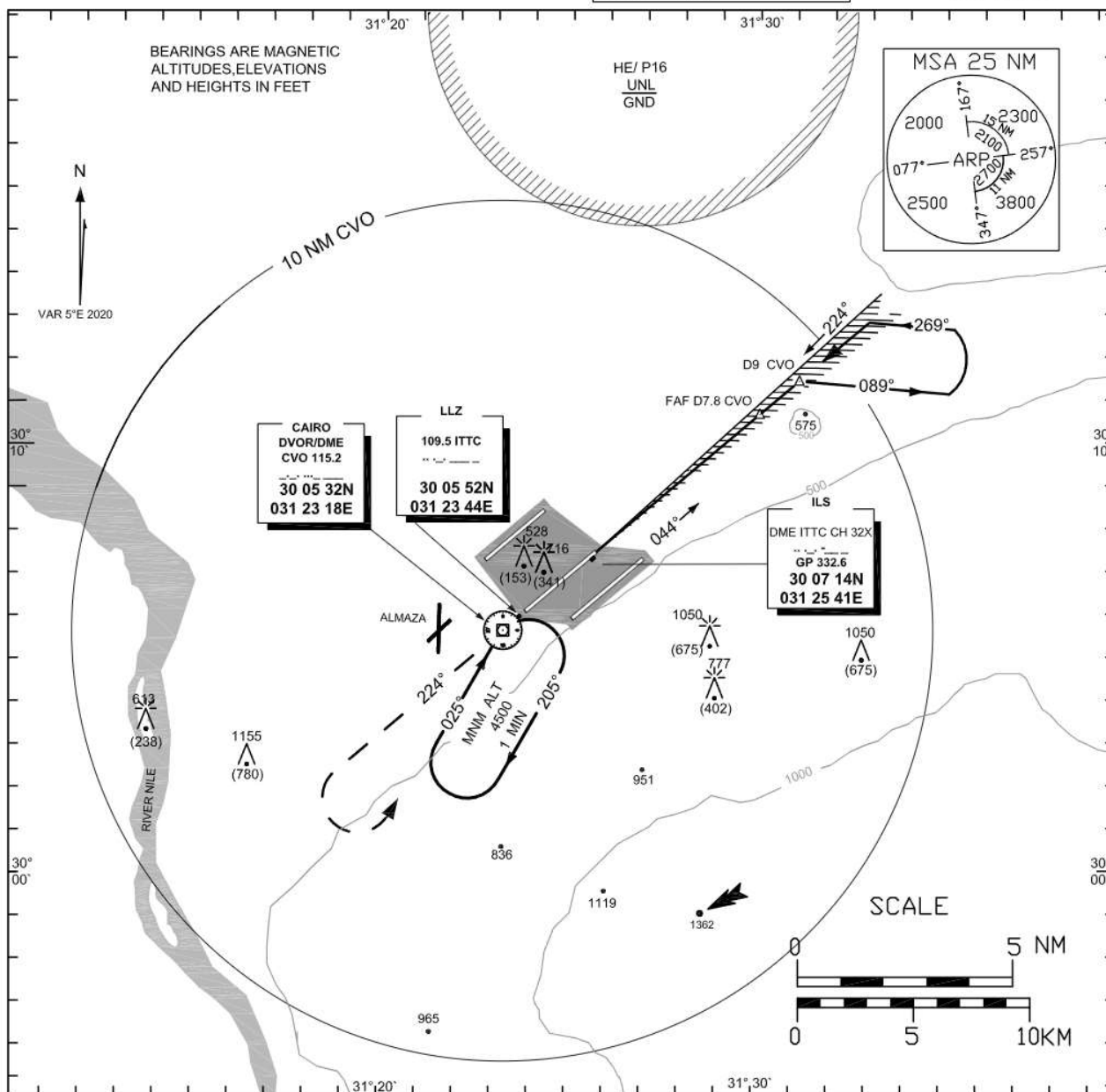
HECA/CAI

INSTRUMENT
APPROACH
CHART-ICAO

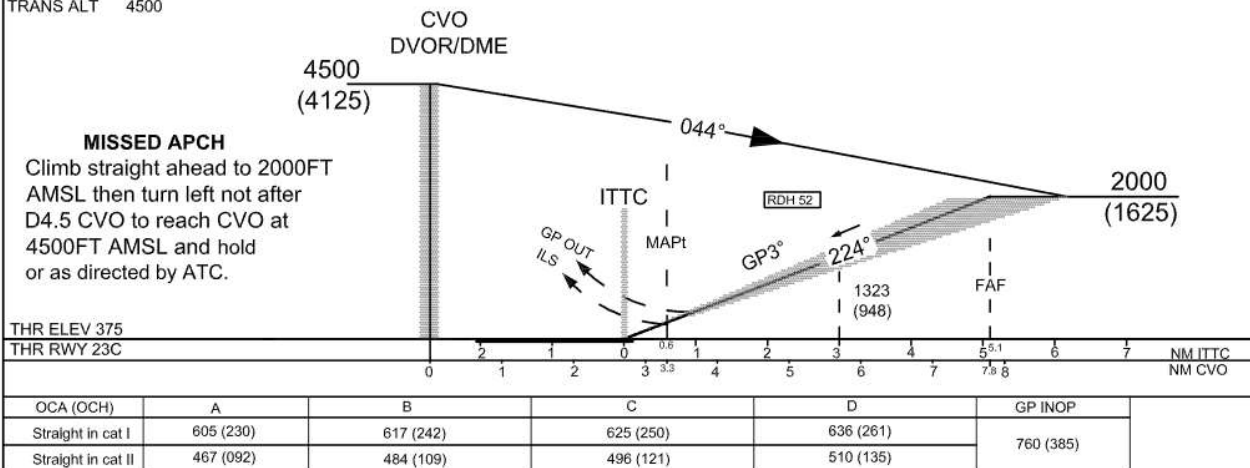
AERODROME ELEV 467FT
HEIGHTS RELATED TO
THR RWY 23C ELEV 375FT

APP	119.05	119.975	120.7	124.375	119.55
TWR	118.1	125.875			
PRE-FLIGHT	120.1	127.6			
D-ATIS	122.6				
GND	120.4	121.9	126.375		
EMERG	121.5				

CAIRO /CAIRO
ILS or LOC
RWY 23C



TRANS LEVEL FL 60
TRANS ALT 4500





CAIRO (HECA)

ILS or LOC RWY 23C

AERONAUTICAL DATA TABULATION

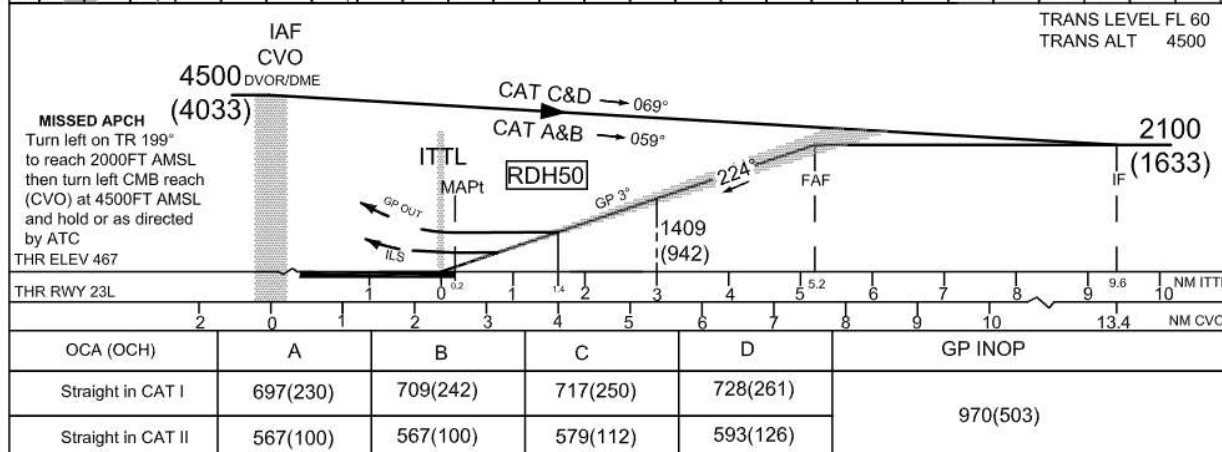
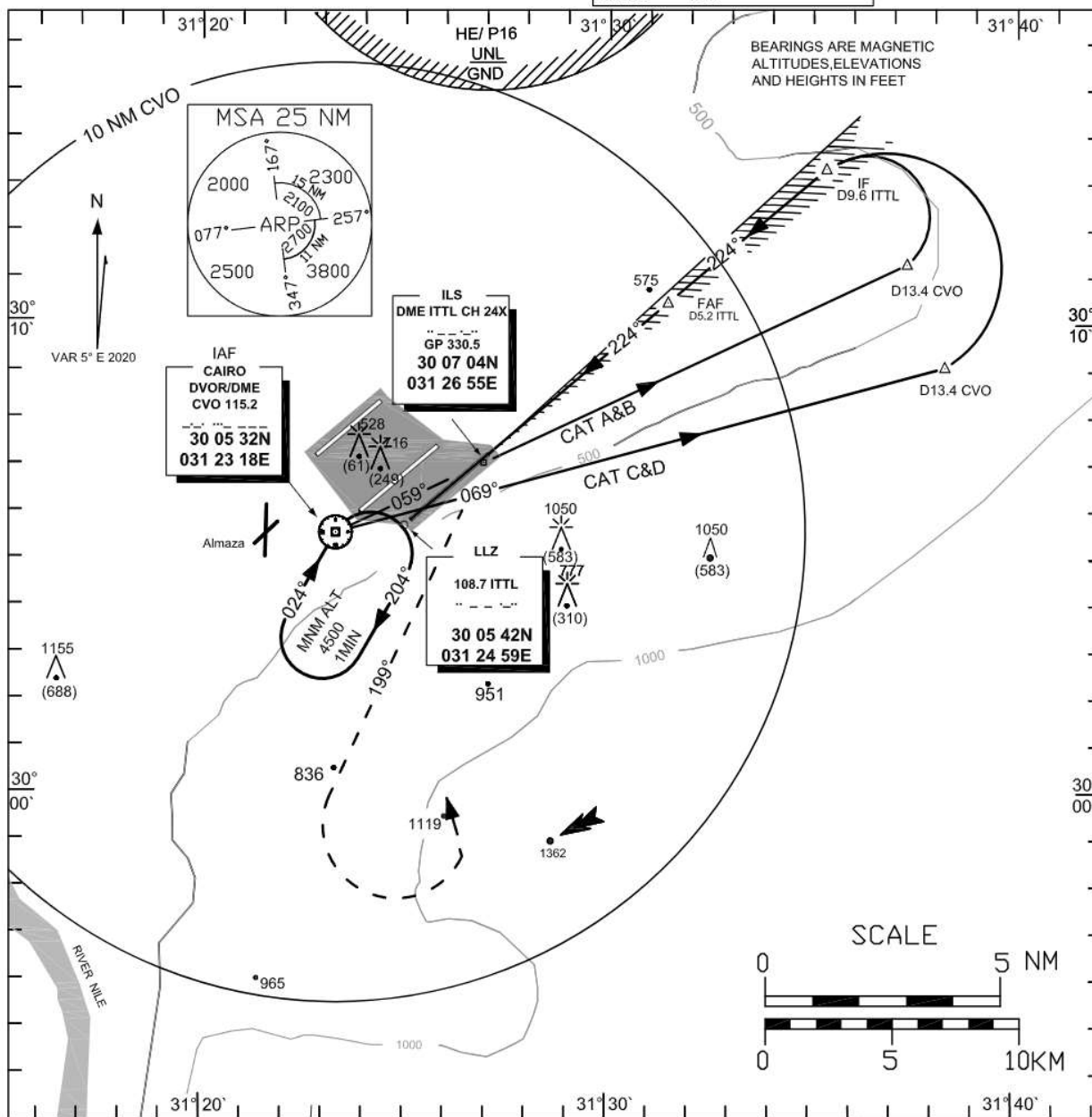
ILS APCH to RWY 23C from CVO DVOR/DME	
Fix/point	Coordinates
CVO DVOR/DME (IAF)	30° 05' 32.3"N 031° 23' 18.3"E
D9 CVO –TR044°/9NM CVO	30° 11' 25.6"N 031° 31' 09.7"E
D7.8 CVO –TR 224°/7.8NM CVO (FAF)	30° 10' 38.4"N 031° 30' 06.6"E
(MAPt) BRG 044.0°/ D 3.3 CVO - 0.6 ITTC(DME)	30° 07' 40.6"N 031° 26' 09.1"E
THR RWY 23C	30° 07' 23.77"N 031° 25' 46.69"E
ITTC (GP/DME)	30° 07' 14.3"N 031° 25' 41.4"E
ITTC (LLZ)	30° 05' 51.8"N 031° 23' 44.0"E

INSTRUMENT
APPROACH
CHART-ICAO

AERODROME ELEV 467FT
HEIGHTS RELATED TO
THR RWY 23L 467FT

APP	119.05	119.975	120.7	124.375	119.55
TWR		118.1	125.875		
PRE-FLIGHT		120.1	127.6		
D-ATIS		122.6			
GND		120.4	121.9	126.375	
EMERG		121.5			

CAIRO /CAIRO
ILS or LOC
RWY23L





CAIRO (HECA)

ILS or LOC RWY 23L

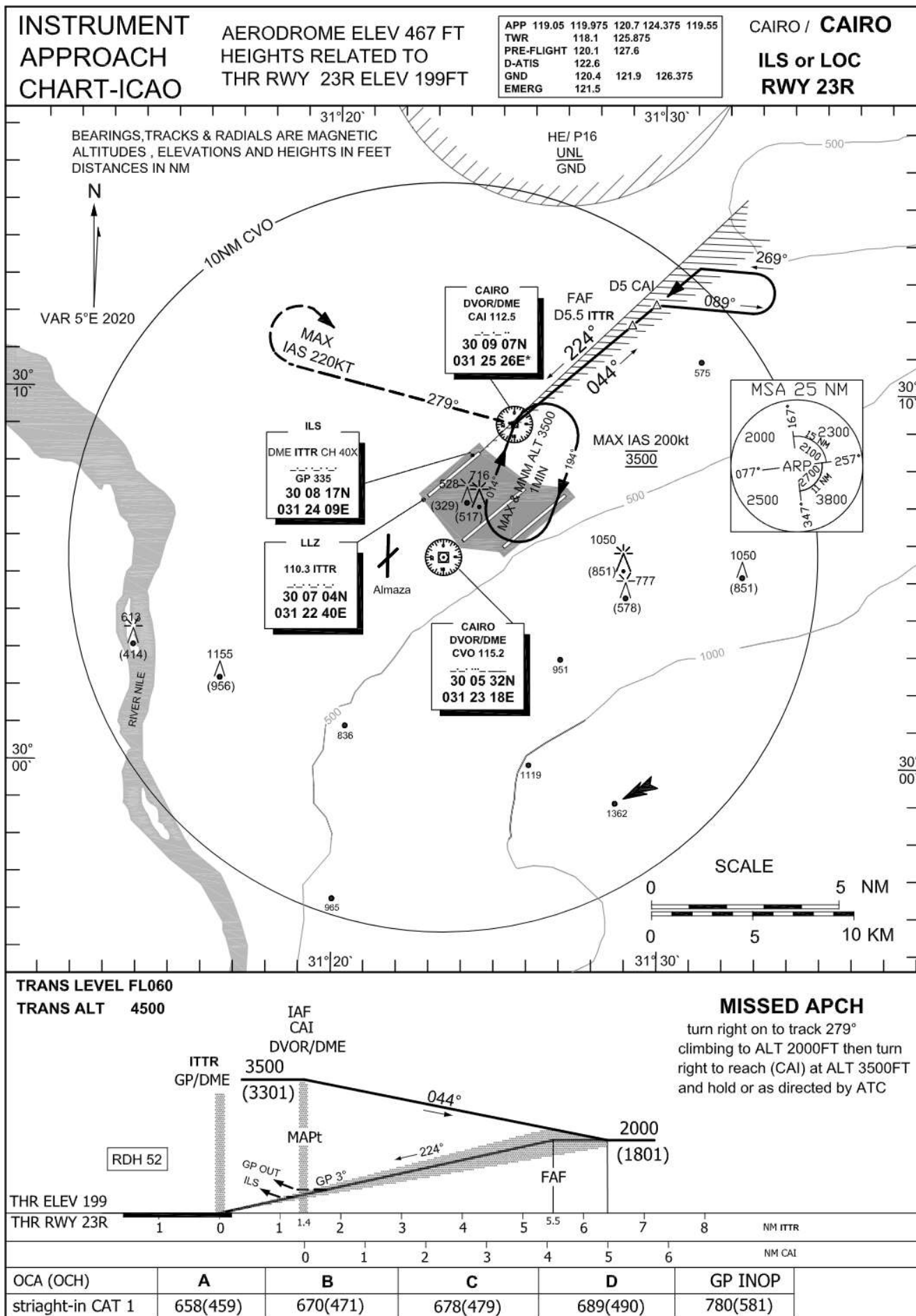
AERONAUTICAL DATA TABULATION

ILS APCH to RWY 23L from CVO DVOR/DME	
Fix/point	Coordinates
CVO DVOR/DME (IAF)	30° 05' 32.3" N 031° 23' 18.3"E
D13.4 CVO –TR 059°/CAT A&B	30° 11' 23.2" N 031° 37' 15.2" E
D13.4 CVO –TR 069°/CAT C&D	30° 09' 11.5" N 031° 38' 12.4"E
D9.6 ITTL –TR 224° (IF)	30° 13' 24.3" N 031° 35' 15.2"E
D5.2 ITTL –TR 224° (FAF)	30° 10' 31.1"N 031° 31' 23.8"E
(MAPt) THR RWY 23L TR 224° /0.2NM ITTL(DME)	30° 07' 14.66"N 031° 27' 01.74"E
THR RWY 23L	30° 07' 14.66"N 031° 27' 01.74"E
ITTL(GP/DME)	30° 07' 03.7"N 031° 26' 54.9"E
ITTL (LLZ)	30° 05' 42.5"N 031° 24' 58.9"E



For Simulation Use Only
Not For Real Life

HECA/CAI





CAIRO (HECA)

ILS or LOC RWY 23R

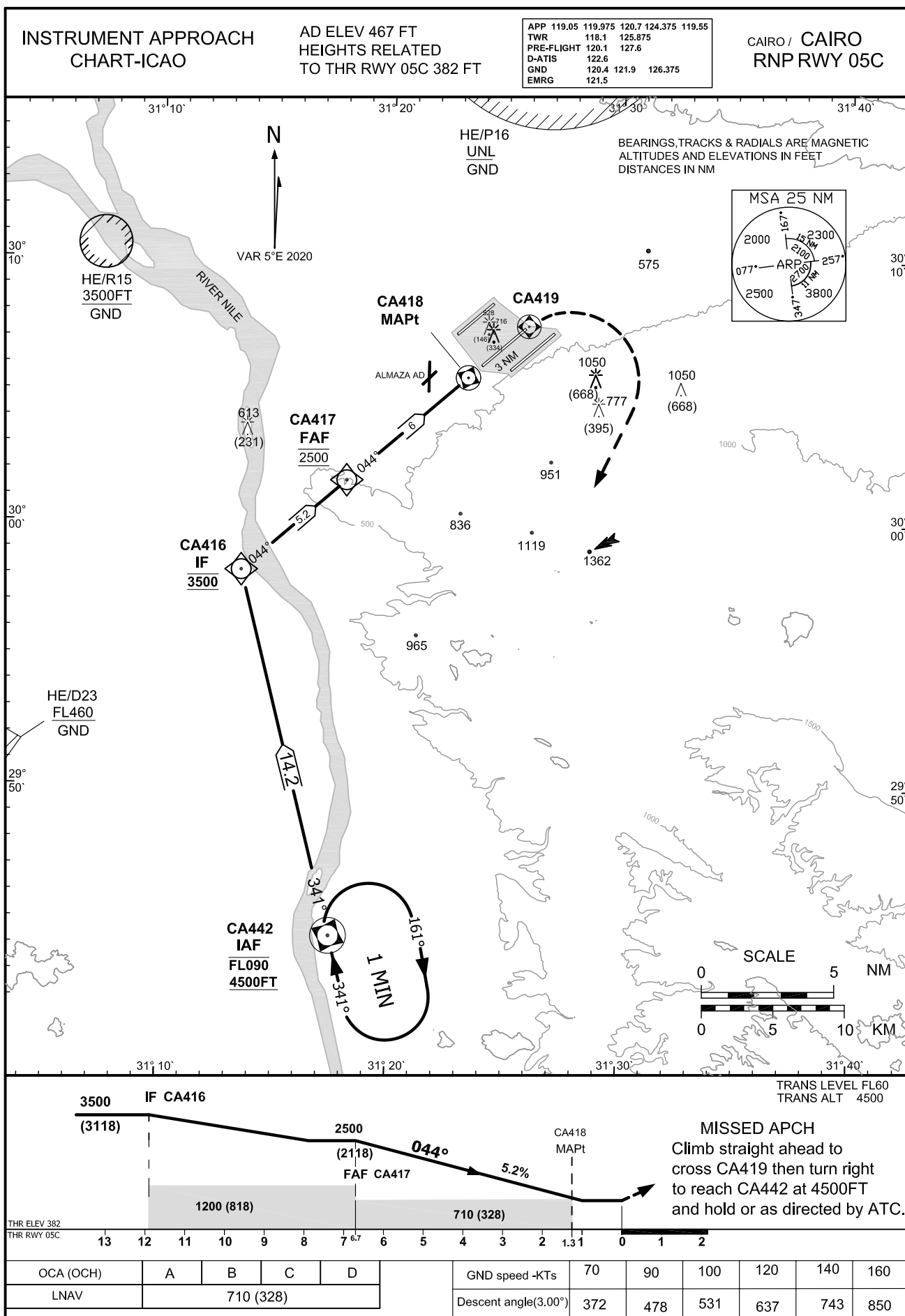
AERONAUTICAL DATA TABULATION

ILS APCH (CAI) to RWY 23R from CAI DVOR/DME	
Fix/point	Coordinates
CAI DVOR/DME (IAF)	30° 09' 07.2"N 031° 25' 26.0"E
D 5 CAI DVOR/DME – RDL 044 (IAF)	30° 12' 21.3"N 031° 29' 46.1"E
D4.1 CAI DVOR/DME – TR 224° (FAP)	30° 11' 48.3"N 031° 29' 01.7"E
(MAPt) CAI /1.4NM ITTR(DME)	30° 09' 07.2"N 031° 25' 26.0"E
THR RWY 23R	30° 08' 20.73"N 031° 24' 22.55"E
ITTR (GP/DME)	30° 08' 16.7"N 031° 24' 09.0"E
ITTR (LZZ)	30° 07' 04.3"N 031° 22' 39.8"E



For Simulation Use Only
Not For Real Life

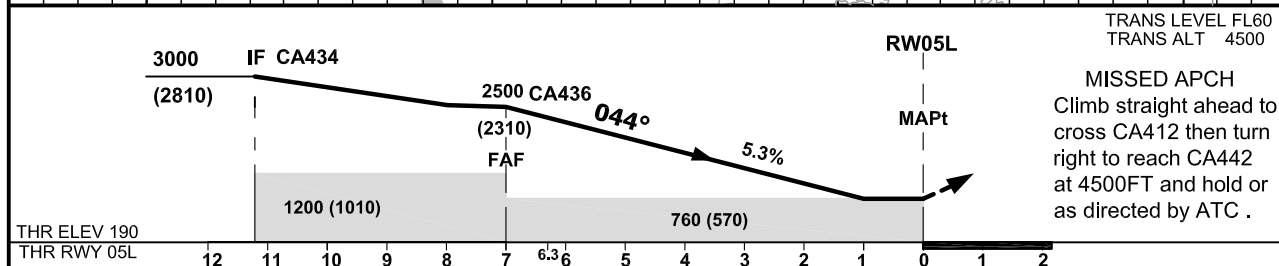
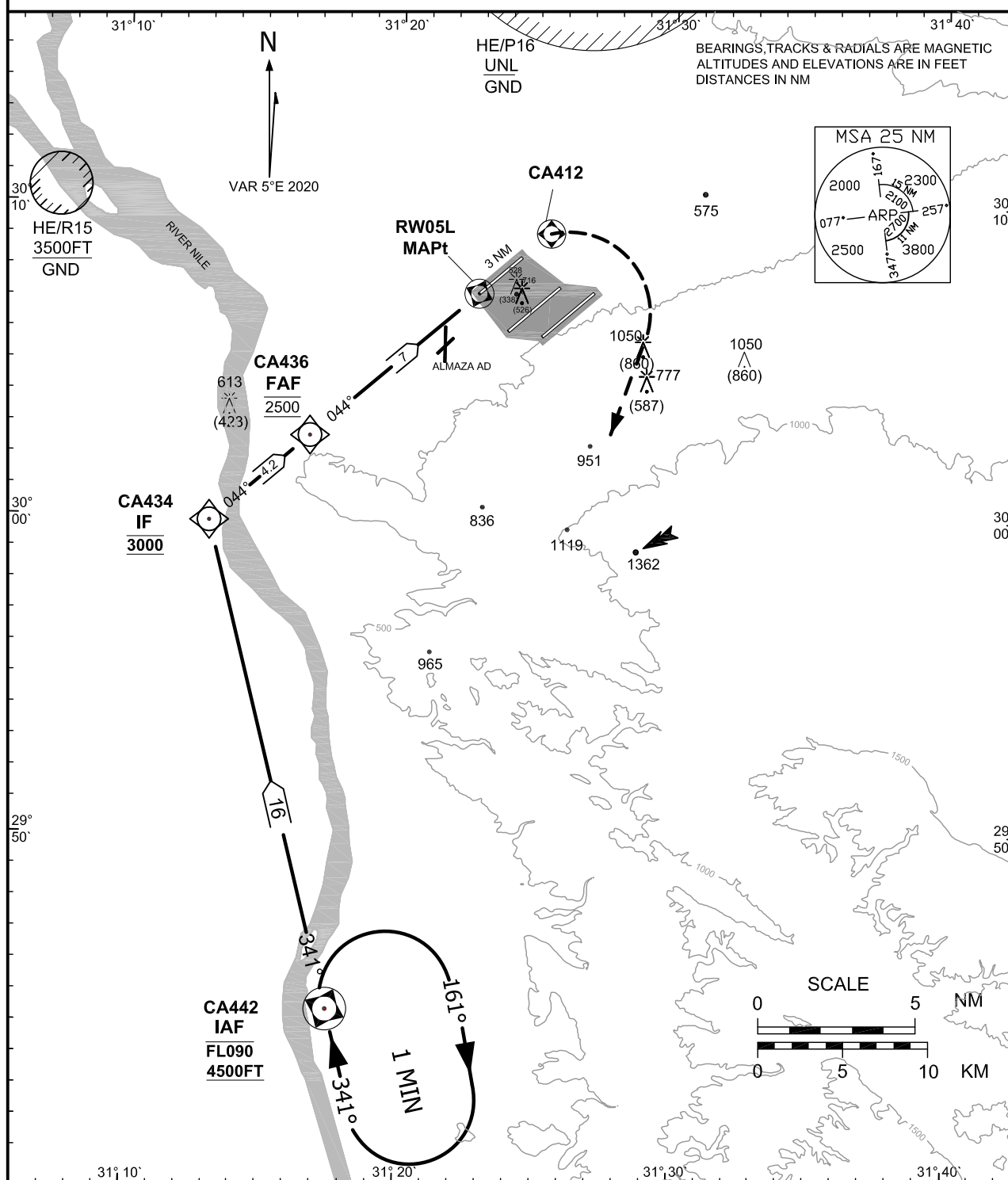
HECA/CAI



INSTRUMENT APPROACH
CHART-ICAO

AD ELEV 467 FT
HEIGHTS RELATED
TO THR RWY 05L 190 FT

APP	119.05	119.975	120.7	124.375	119.55
TWR		118.1	125.875		
PRE-FLIGHT		120.1	127.6		
D-ATIS		122.6			
GND		120.4	121.9	126.375	
EMRG		121.5			

CAIRO / CAIRO
RNP RWY 05L

OCA (OCH)	A	B	C	D	GND speed -KTs	70	90	100	120	140	160	
LNAV	760 (570)					Descent angle(3.00°)	372	478	531	637	743	850



For Simulation Use Only
Not For Real Life

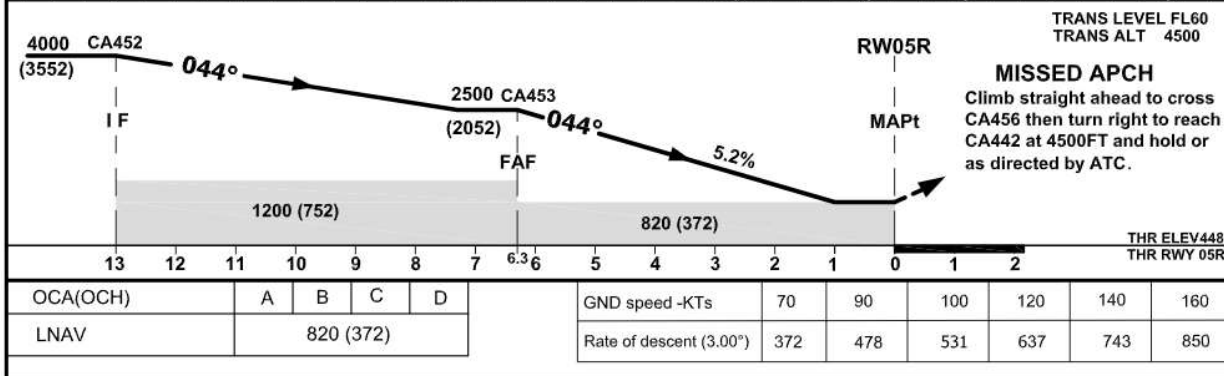
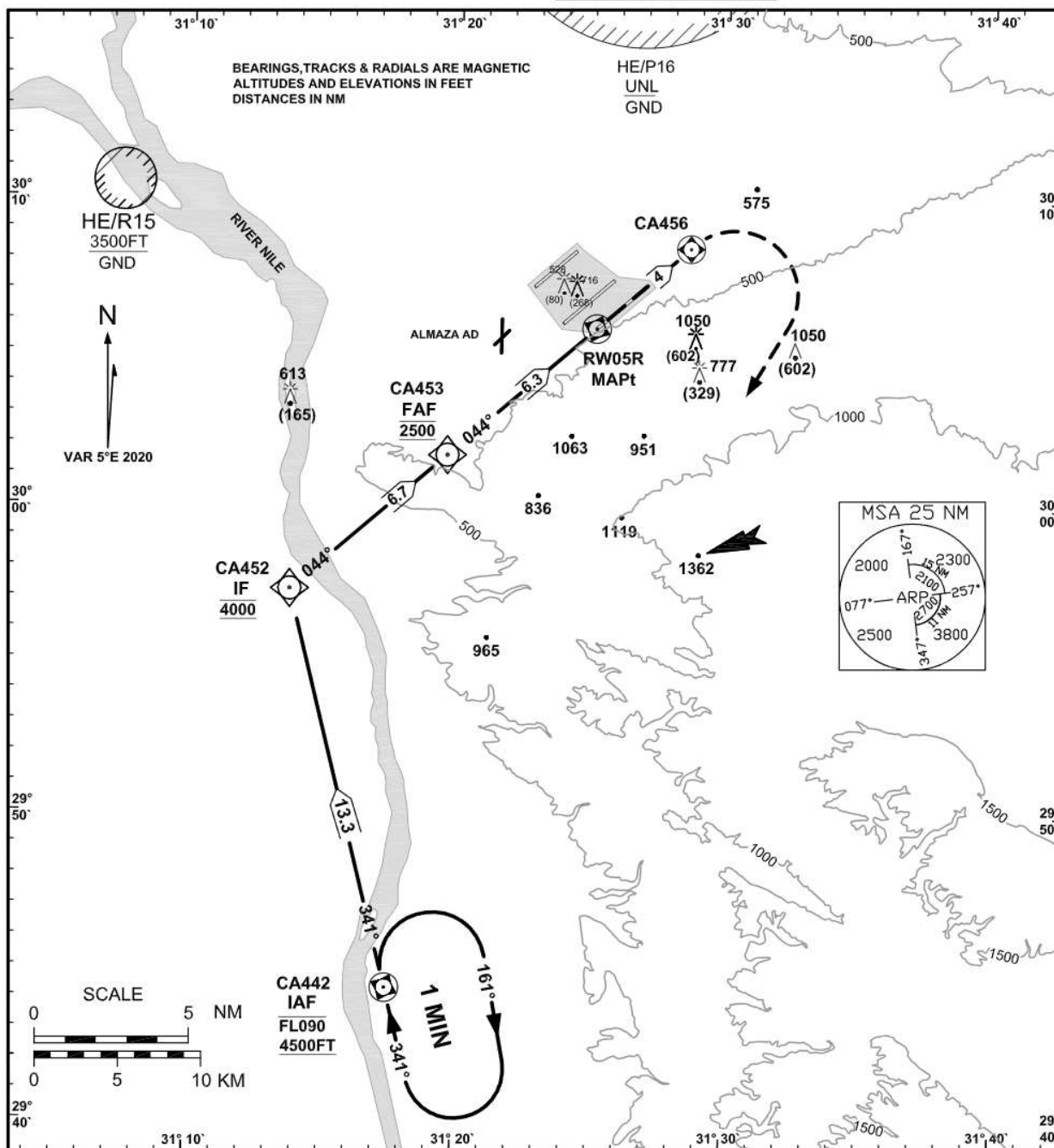
HECA/CAI

INSTRUMENT APPROACH CHART-ICAO

AD ELEV 467 FT
HEIGHTS RELATED
TO THR RWY 05R 448 FT

APP	119.05	119.975	120.7	124.375	119.55
TWR		118.1	125.875		
PRE-FLIGHT		120.1	127.6		
D-ATIS		122.6			
GND		120.4	121.9	126.375	
EMRG		121.5			

CAIRO / CAIRO
RNP RWY 05R





Instrument Approach
CHART-ICAO

AD ELEV 467FT
HEIGHTS RELATED TO THR
RWY 05R ELEV 448FT

APP 119.05 119.975 120.7
124.375 119.55
TWR 118.1 125.875
PRE-FLIGHT 120.1 127.6
D-ATIS 122.6
GND 120.4 121.9 126.375
EMERG 121.5

CAIRO/ CAIRO
RNP RWY 05R

TABULAR DESCRIPTION

Serial Number	Path Descriptor	Waypoint Identifier	Fly-Over	Course °M(°T)	Magnetic Variation	Distance (NM)	Turn Direction	Altitude(FT)	Speed (Kt)	VPA°/ TCH(FT)	Navigation Specification
010	IF	CA442	y	-	-5	-	-	+4500	-		RNP APCH
020	TF	CA452	-	341(346)	-5	13.3	R	@3500	-		RNP APCH
010	IF	CA452	-	-	-5	-	-	@3500	-		RNP APCH
020	TF	CA453	-	044(049)	-5	6.7	-	@2500	-		RNP APCH
030	TF	RW05R	y	044(049)	-5	6.3	-	-	-	-3.0 /50	RNP APCH
040	TF	CA456	y	044(049)	-5	4	-	-	-		RNP APCH
050	DF	CA442	y	-	-5	-	R	@4500	-		RNP APCH
060	HM	CA442	y	341(346)	-5	1 MIN	R	+4500 -FL090	-		RNP APCH

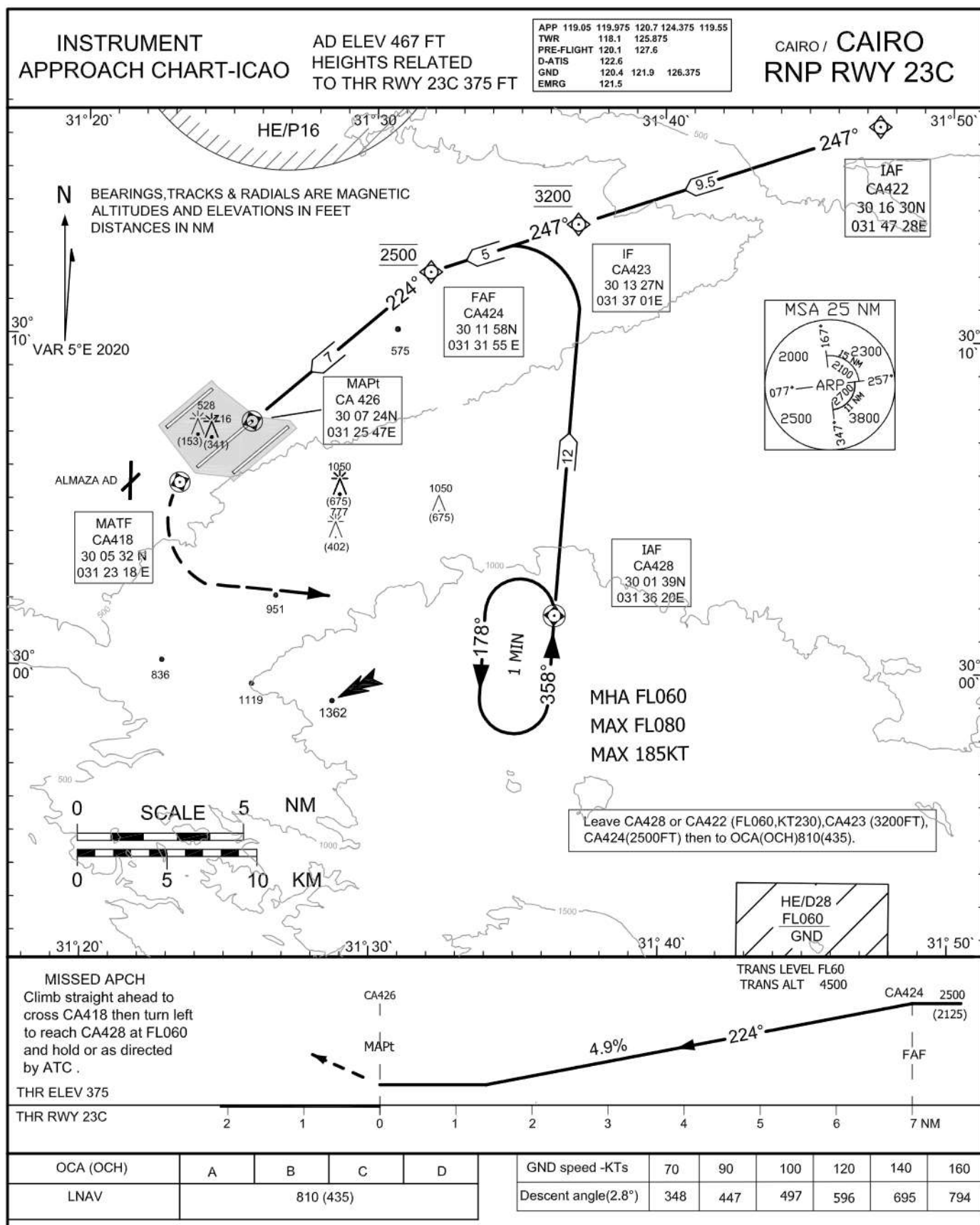
Waypoint Coordinates

Waypoint Identifier	Coordinates
CA442	29° 44' 19.99"N 031° 17' 31.00"E
CA452	29° 57' 16.96"N 031° 13' 47.26"E
CA453	30° 01' 40.57"N 031° 19' 37.12"E
RW05R	30° 05' 49.78"N 031° 25' 08.65"E
CA456	30° 08' 26.98"N 031° 28' 38.17"E



For Simulation Use Only
Not For Real Life

HECA/CAI





For Simulation Use Only
Not For Real Life

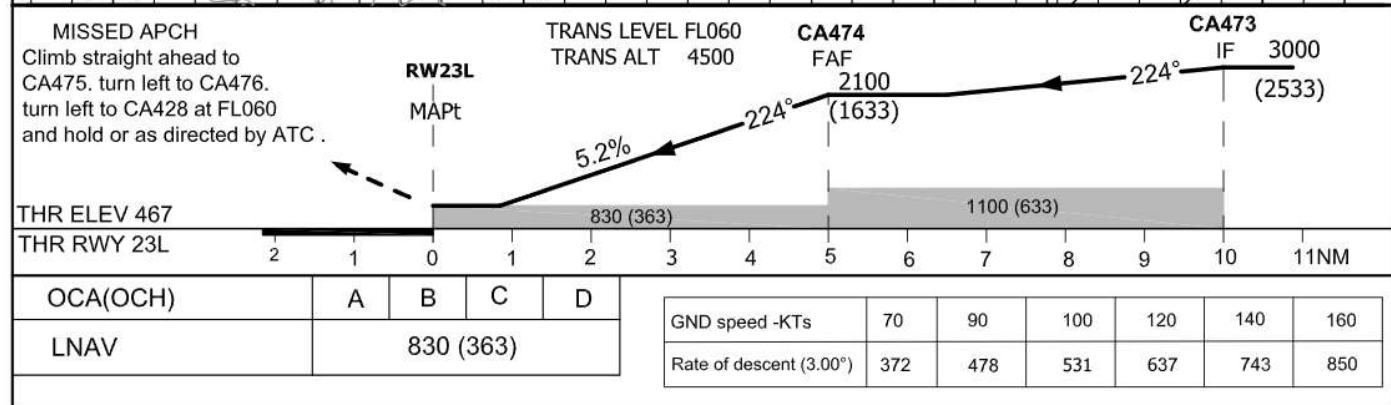
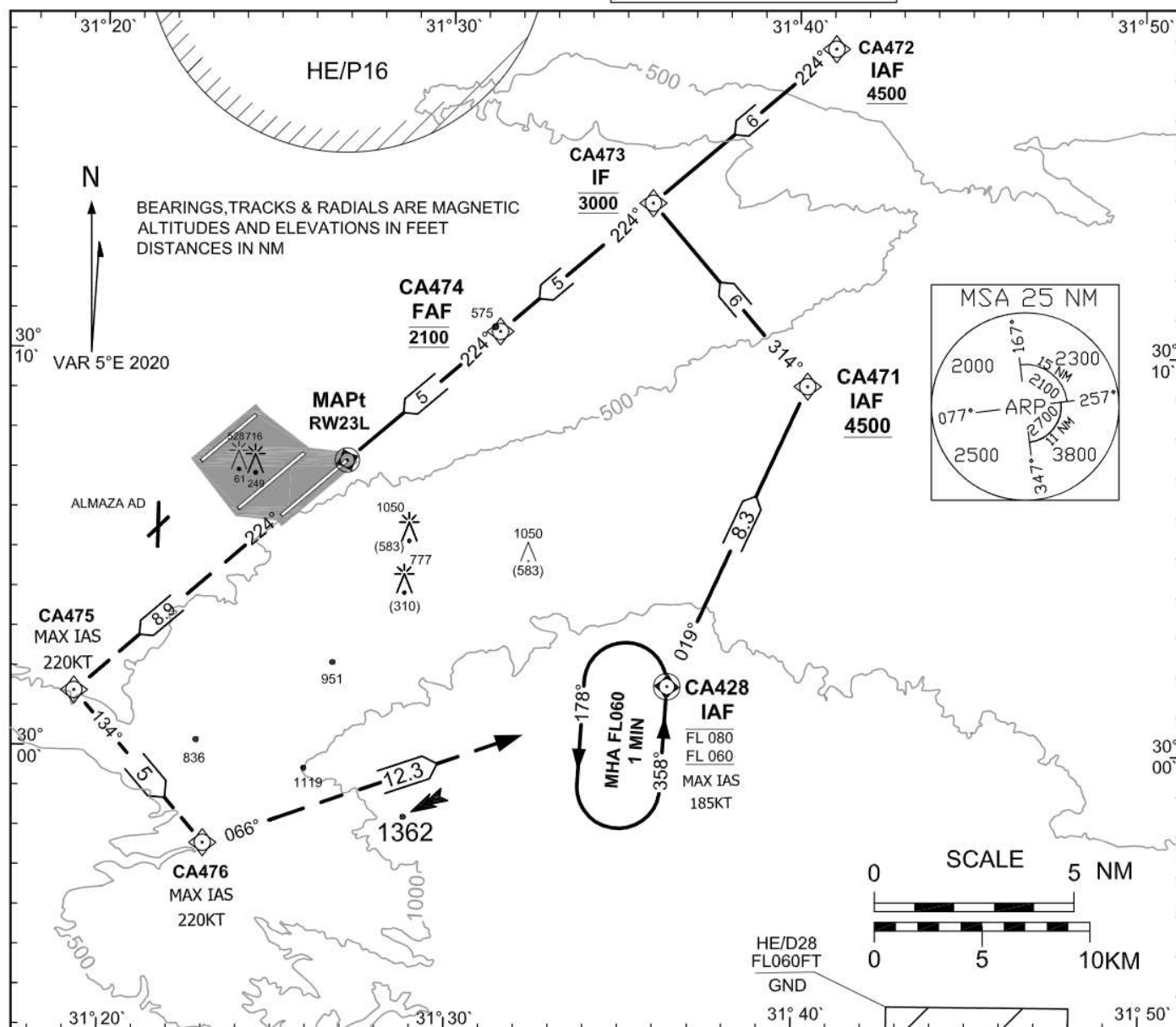
HECA/CAI

INSTRUMENT APPROACH CHART-ICAO

AD ELEV 467 FT
HEIGHTS RELATED
TO AD ELEV

APP	119.05	119.975	120.7	124.375	119.55
TWR	118.1	125.875			
PRE-FLIGHT	120.1	127.6			
D-ATIS	122.6				
GND	120.4	121.9	126.375		
EMRG	121.5				

CAIRO / **CAIRO**
RNP RWY 23L





Instrument Approach CHART-ICAO	AD ELEV 467FT HEIGHTS RELATED TO THR RWY 23L ELEV 467FT	APP	119.05 119.975 120.7	CAIRO/ CAIRO RNP RWY 23L
			124.375 119.55	
		TWR	118.1 125.875	
		PRE-FLIGHT	120.1 127.6	
		D-ATIS	122.6	
		GND	120.4 121.9 126.375	
		EMERG	121.5	

TABULAR DESCRIPTION											
Serial Number	Path Descriptor	Waypoint Identifier	Fly-Over	Course °M(°T)	Magnetic Variation	Distance (NM)	Turn Direction	Altitude(FT)	Speed (Kt)	VPA°/ TCH(FT)	Navigation Specification
010	IF	CA428	y	-	-5	-	-	+FL060	-		RNP APCH
020	TF	CA471	-	019(024)	-5	8.3	L	+4500	-		RNP APCH
030	TF	CA473	-	314(319)	-5	6	L	@3000	-		RNP APCH
010	IF	CA472	-	-	-5	-	-	+4500	-		RNP APCH
020	TF	CA473	-	224(229)	-5	6	-	@3000	-		RNP APCH
010	IF	CA473	-	-	-5	-	-	@3000	-		RNP APCH
020	TF	CA474	-	224(229)	-5	5	-	@2100	-		RNP APCH
030	TF	RW23L	y	224(229)	-5	5	-	-	-	-3.0 /50	RNP APCH
040	TF	CA475	-	224(229)	-5	8.9	L	-	-220		RNP APCH
050	TF	CA476	-	134(139)	-5	5	L	-	-220		RNP APCH
060	TF	CA428	y	066(071)	-5	12.3	-	@FL060	-		RNP APCH
070	HM	CA428	y	358(003)	-5	1 MIN	L	+FL060 -FL080	-185		RNP APCH

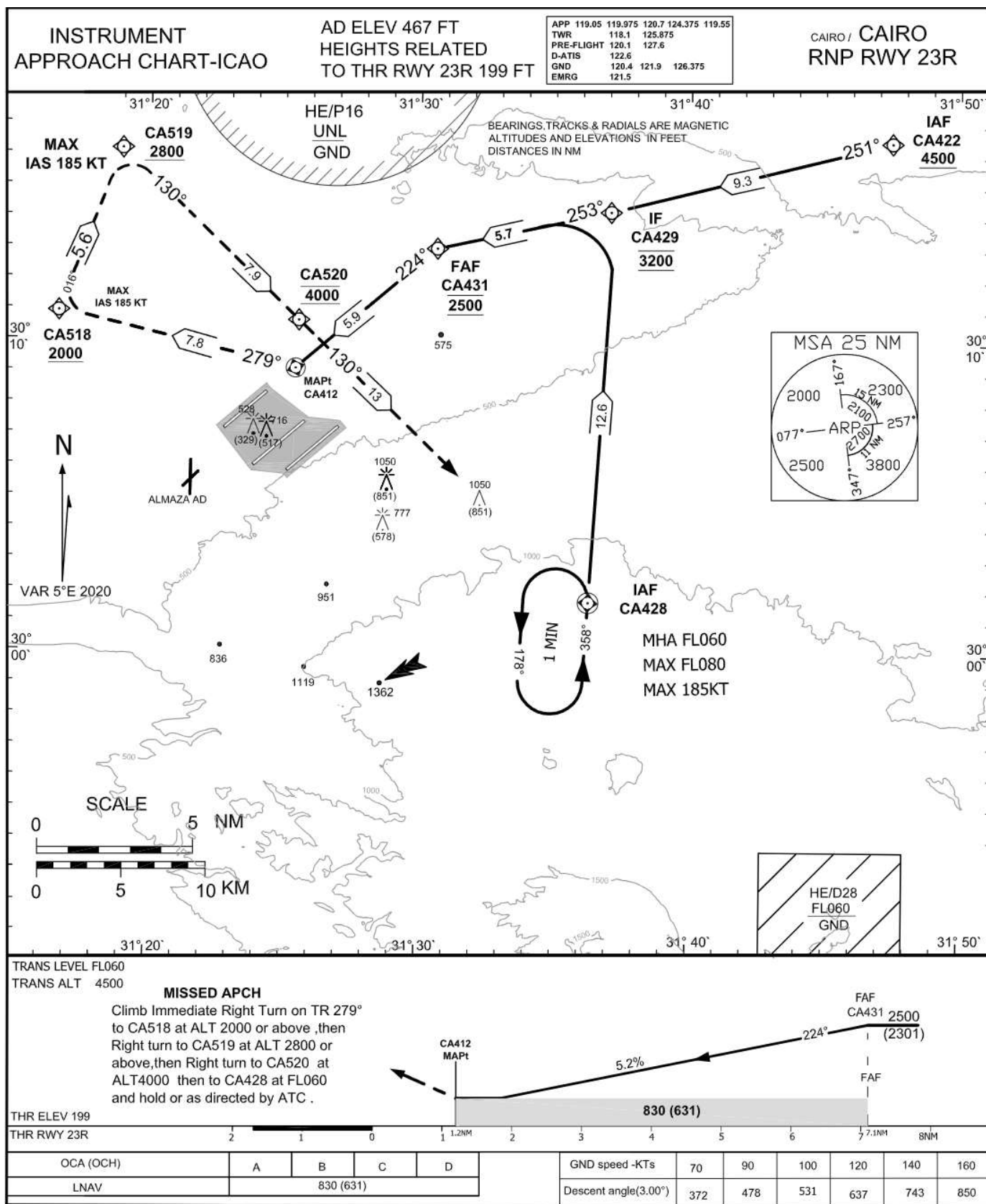
Waypoint Coordinates

Waypoint Identifier	Coordinates
CA428	30° 01' 39.00"N 031° 36' 20.00" E
CA471	30° 09' 13.86"N 031° 40' 17.93" E
CA472	30° 17' 43.14"N 031° 41' 01.89" E
CA473	30° 13' 47.77"N 031° 35' 46.68" E
CA474	30° 10' 31.48"N 031° 31' 24.33" E
RW23L	30° 07' 14.66"N 031° 27' 01.74" E
CA475	30° 01' 22.85"N 031° 19' 13.55" E
CA476	29° 57' 35.32"N 031° 22' 59.50" E



For Simulation Use Only
Not For Real Life

HECA/CAI



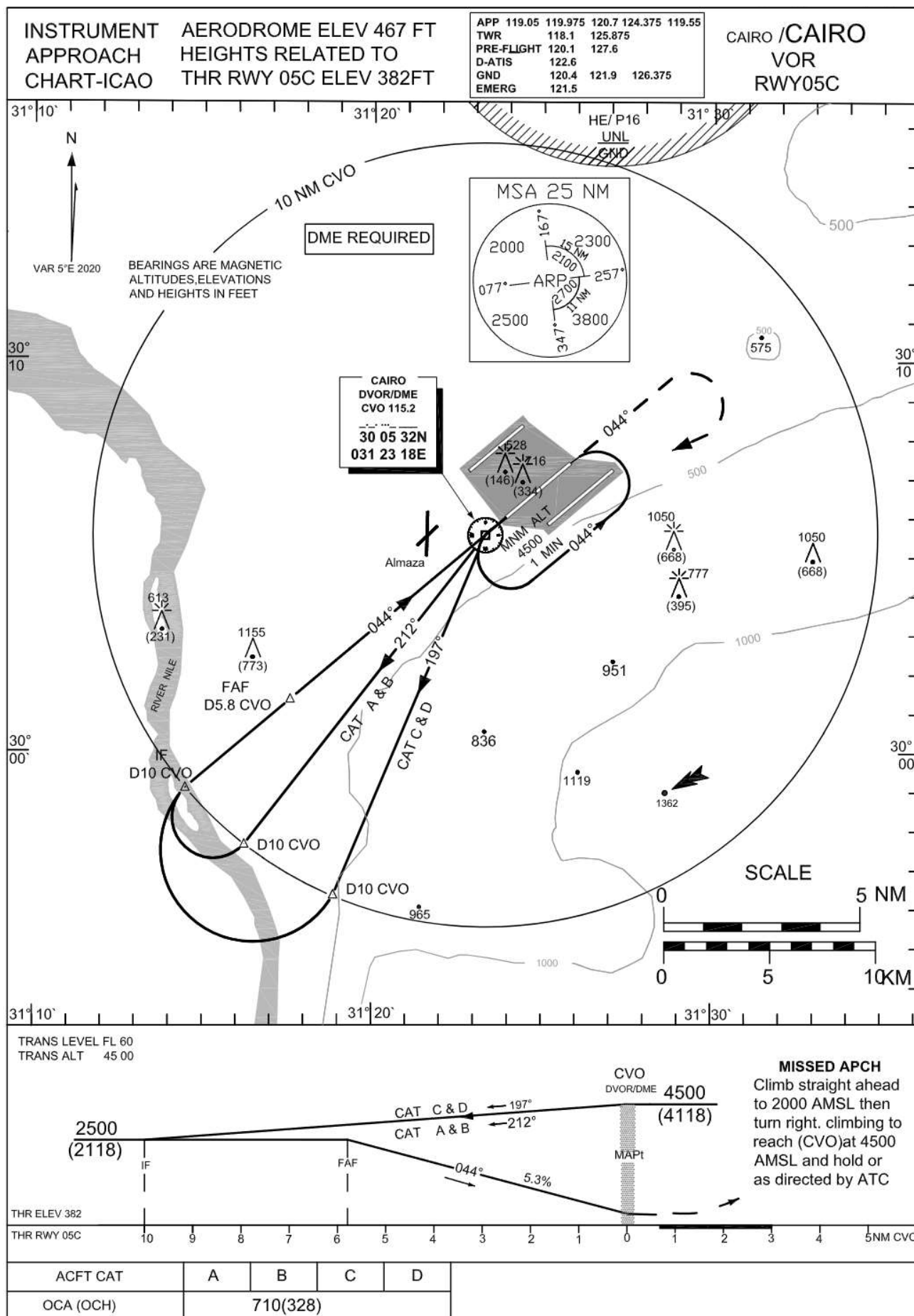


Instrument Approach CHART-ICAO	AD ELEV 467ft HEIGHTS RELATED TO THR RWY 23R ELEV 199FT	APP	119.05 119.975 120.7	CAIRO/ CAIRO RNP RWY 23R
			124.375 119.55	
		TWR	118.1 125.875	
		PRE-FLIGHT	120.1 127.6	
		D-ATIS	122.6	
		GND	120.4 121.9 126.375	
		EMERG	121.5	

TABULAR DESCRIPTION											
Serial Number	Path Descriptor	Waypoint Identifier	Fly-Over	Course °M(°T)	Magnetic Variation	Distance (NM)	Turn Direction	Altitude(FT)	Speed (Kt)	VPA°/ TCH(FT)	Navigation Specification
010	IF	CA422	-	-	-5	-	-	+4500	-		RNP APCH
020	TF	CA429	-	251(256)	-5	9.3	-	@3200	-		RNP APCH
010	IF	CA428	y	-	-5	-	-	+FL060	-		RNP APCH
020	TF	CA429	-	358(003)	-5	12.6	L	@3200	-		RNP APCH
010	IF	CA429	-	-	-5	-	-	@3200	-		RNP APCH
020	TF	CA431	-	253(258)	-5	5.7	L	@2500	-		RNP APCH
030	TF	CA 412	y	224(229)	-5	5.9	R	-	-	-3.0 /50	RNP APCH
040	TF	CA518	-	279(284)	-5	7.8	R	+2000	-185		RNP APCH
050	TF	CA519	-	016(021)	-5	5.6	R	+2800	-185		RNP APCH
060	TF	CA520	-	130(135)	-5	7.9	-	@4000	-185		RNP APCH
070	TF	CA428	y	130(135)	-5	13	L	@FL060	-185		RNP APCH
080	HM	CA428	y	178(183)	-5	1 MIN	L	+FL060 -FL080	-185		RNP APCH

Waypoint Coordinates

Waypoint Identifier	Coordinates
CA412	30° 09' 07.00"N 031° 25' 26.00" E
CA422	30° 16' 29.51"N 031° 47' 27.74" E
CA428	30° 01' 39.00"N 031° 36' 20.00" E
CA429	30° 14' 12.84"N 031° 37' 03.43" E
CA431	30° 12' 59.88"N 031° 30' 38.31" E
CA518	30° 10' 54.38"N 031° 16' 39.16" E
CA519	30° 16' 09.01"N 031° 18' 57.61" E
CA520	30° 10' 39.85"N 031° 25' 32.19" E





CAIRO (HECA)

VOR RWY 05C

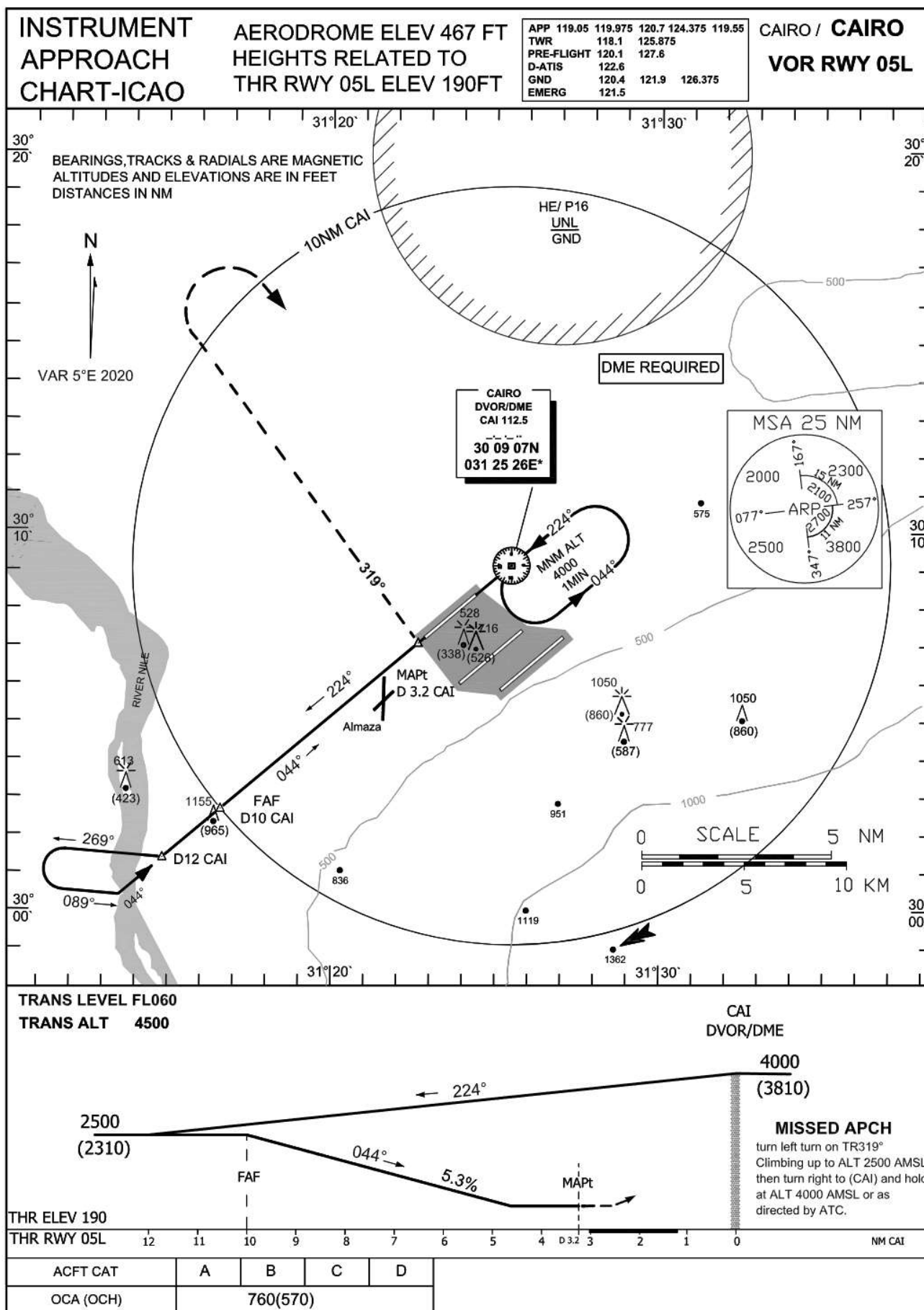
AERONAUTICAL DATA TABULATION

VOR APCH to RWY 05C from CVO DVOR/DME	
Fix/point	Coordinates
CVO DVOR/DME (IAF)	30° 05' 32.3"N 031° 23' 18.3"E
D 10 CVO - TR197° CAT C&D	29° 56' 17.4"N 031° 18' 58.2"E
D 10 CVO - TR212° CAT A&B	29° 57' 33.4"N 031° 16' 20.5"E
D 10 CVO - TR 044° (IF)	29° 58' 58.9"N 031° 14' 35.0"E
D 5.8 CVO - TR 044° (FAF)	30° 01' 17.0"N 031° 17' 38.3"E
(MAPt) CVO TR 044°	30° 05' 32.3"N 031° 23' 18.3"E
THR RWY 05C	30° 05' 58.88"N 031° 23' 53.64"E



For Simulation Use Only
Not For Real Life

HECA/CAI





CAIRO (HECA)

VOR RWY 05L

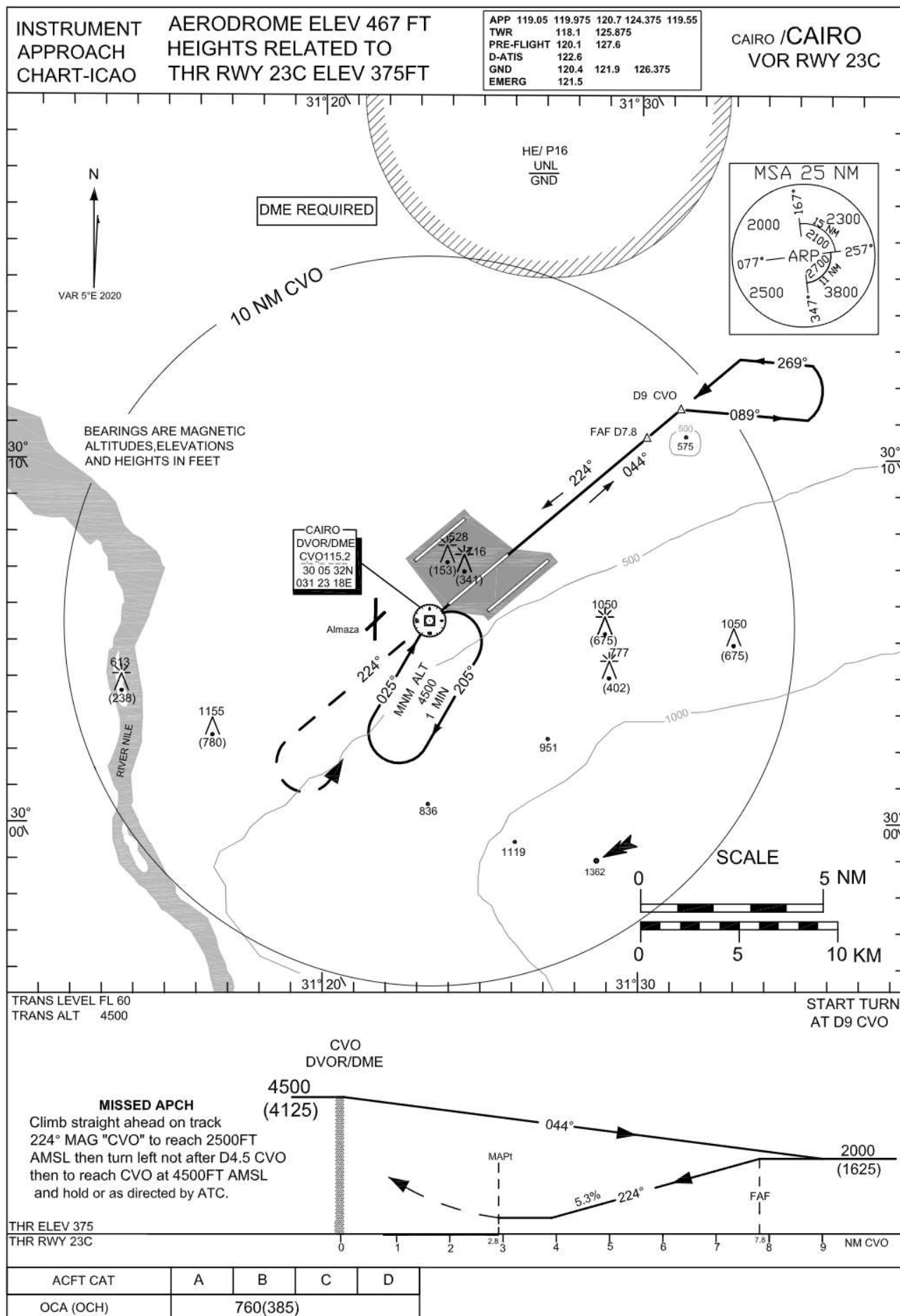
AERONAUTICAL DATA TABULATION

VOR (CAI) to RWY 05L from CAI DVOR/DME	
Fix/point	Coordinates
CAI DVOR/DME (IAF)	30° 09' 07.2"N 031° 25' 26.0"E
D12 CAI –TR224°/12NM CAI	30° 01' 17.97"N 031° 14' 55.33"E
D10 CAI –TR 044°/10NM CAI (FAF)	30° 02' 36.16"N 031° 16' 40.26"E
(MAPt) BRG 224.49°/D3.2 CAI	30° 07' 02.45"N 031° 22' 37.35"E
THR RWY 05L	30° 07' 11.03"N 031° 22' 48.88"E



For Simulation Use Only
Not For Real Life

HECA/CAI





CAIRO (HECA)

VOR RWY 23C

AERONAUTICAL DATA TABULATION

VOR APCH to RWY 23C from CVO DVOR/DME	
Fix/point	Coordinates
CVO DVOR/DME (IAF)	30° 05' 32.3"N 031° 23' 18.3"E
D9 CVO –TR 044°/9NM CVO	30° 11' 25.6"N 031° 31' 09.7"E
D7.8 ITTC –TR 224°/7.8NM ITTC (FAF)	30° 10' 37.9" N 031° 30' 6.0"E
(MAPt) BRG 044.0°/ 2.8NM CVO	30° 07' 24.4"N 031° 25' 46.8" E
THR RWY 23C	30° 07' 23.77"N 031° 25' 46.69"E



For Simulation Use Only
Not For Real Life

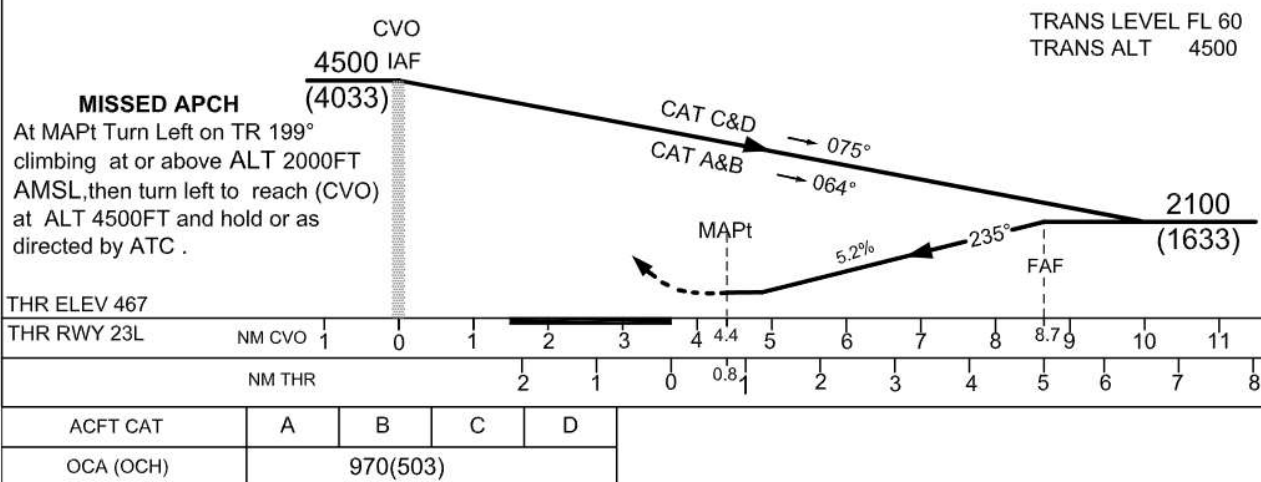
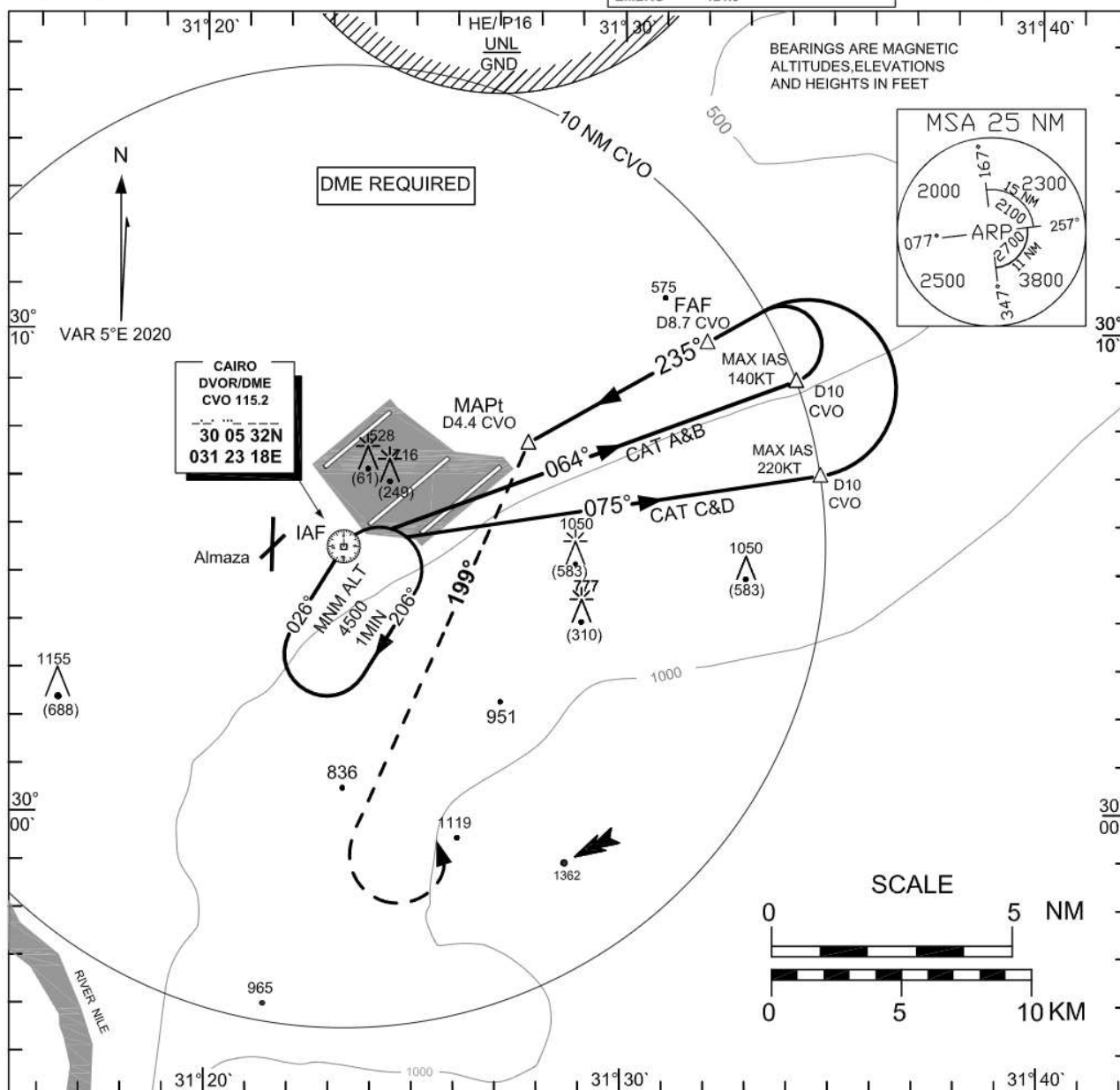
HECA/CAI

INSTRUMENT
APPROACH
CHART-ICAO

AERODROME ELEV 467FT
HEIGHTS RELATED TO
AD ELEVATION

APP	119.05	119.975	120.7	124.375	119.55
TWR	118.1	125.875			
PRE-FLIGHT	120.1	127.6			
D-ATIS	122.6				
GND	120.4	121.9	126.375		
EMERG	121.5				

CAIRO /CAIRO
VOR
RWY 23L





CAIRO (HECA)

VOR RWY 23L

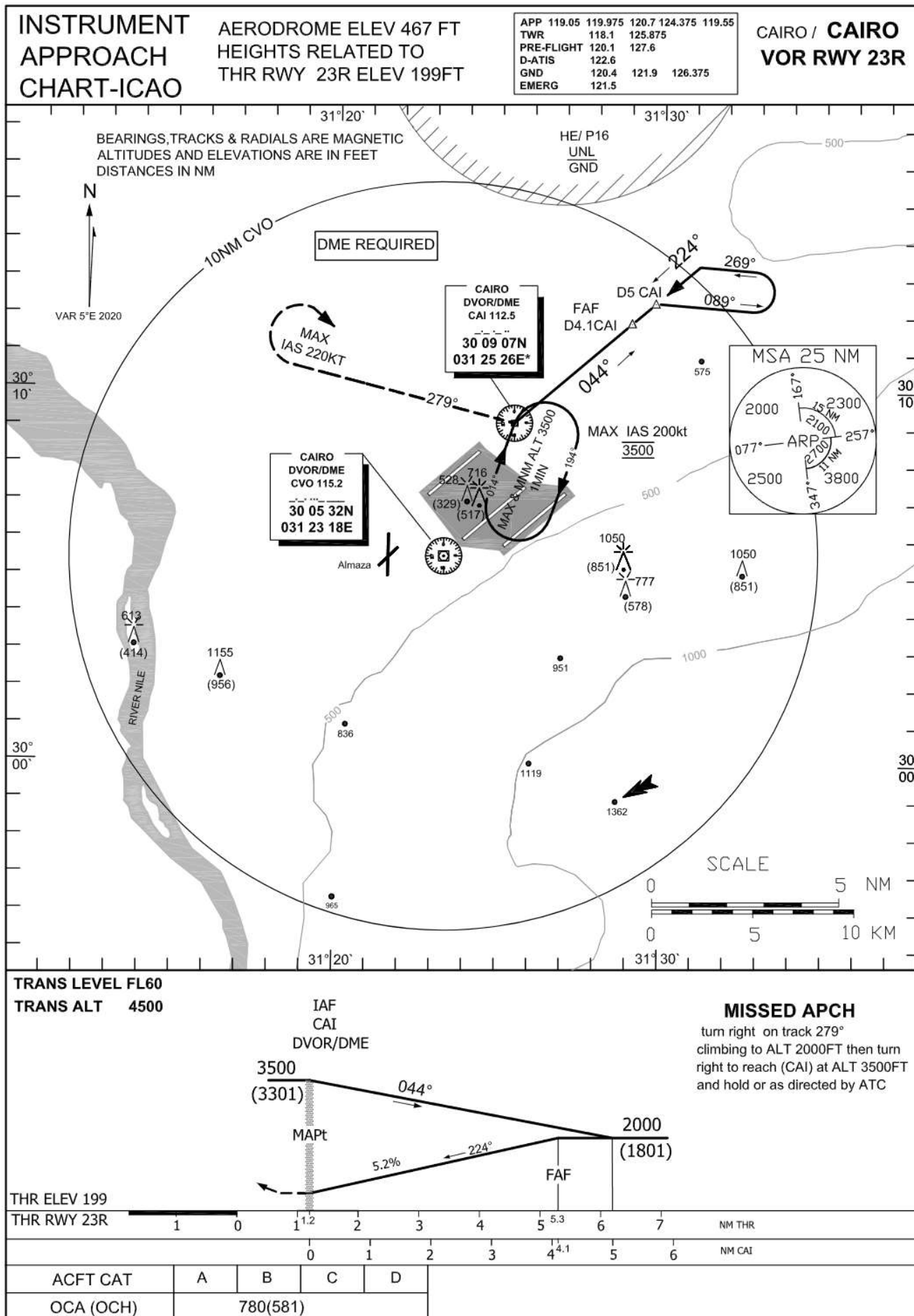
AERONAUTICAL DATA TABULATION

VOR (CVO) APCH to RWY 23L from CVO DVOR/DME	
Fix/point	Coordinates
CVO DVOR/DME (IAF)	30° 05' 32.3"N 031° 23' 18.3"E
D10 CVO –TR075°/10NM CVO FOR ACFT(C&D)	30° 07' 07.4"N 031° 34' 41.12"E
D10 CVO –TR064°/10NM CVO FOR ACFT (A&B)	30° 09' 05.4"N 031°34' 04.90"E
D8.7 CVO – TR235°/8.7NM CVO (FAF)	30° 09' 52.37"N 031° 31' 56.54"E
(MAPt) BRG 055.04°/ 4.4 NM CVO	30° 07' 44.00"N 031° 27' 41.24"E
THR RWY 23L	30°07' 14.66"N 031° 27' 01.74"E



For Simulation Use Only
Not For Real Life

HECA/CAI





CAIRO (HECA)

VOR RWY 23R

AERONAUTICAL DATA TABULATION

VOR (CAI) to RWY 23R from CAI DVOR/DME	
Fix/point	Coordinates
CAI DVOR/DME (IAF)	30° 09' 07.2"N 031° 25' 26.0"E
D 5 CAI DVOR/DME – RDL 044(IAF)	30° 12' 21.3"N 031° 29' 46.1"E
D4.1 CAI DVOR/DME – TR 224 (FAF)	30° 11' 48.3"N 031° 29' 01.7"E
(MAPt) CAI	30° 09' 07.2"N 031° 25' 26.0"E
THR RWY 23R	30° 08' 20.73"N 031° 24' 22.55"E